

C.WEB EDI Booking Flow

Version 17.2

Feedback or questions regarding this document?
webmaster@cweb.lu

Table of Contents

1.	Introduction	4
1.1.	Changes against the previous versions of this document	5
2.	EDI - Flow charts	10
3.	Concept	12
3.1.	Booking Request	12
3.2.	Booking Request Receipt	12
3.3.	Processing by Booking Agent	12
3.4.	Booking Request Feedback	12
3.5.	Unit Moves	12
3.6.	Route Info	13
3.7.	Timestamps	13
4.	Transmission	14
5.	Messages	15
5.1.	cwebBookingRequest	15
5.2.	cwebBookingRequestFeedback	20
5.3.	cwebUnitMoves	24
5.4.	cwebRouteInfo	26
5.5.	MessageRejected	27
5.6.	InternalError	27
5.7.	Response examples	28
5.8.	cwebBookingRequestFeedback response example (several units to report):	29
5.9.	cwebUnitMoves response example	32
5.10.	cwebRouteInfo response example:	34
6.	Fields & Descriptions	35
6.1.	Booking Request field list	35
6.2.	Booking Request Receipt field list	44
6.3.	Booking Request Feedback field list	45
6.4.	Unit Moves field list	51
6.5.	Route Info field list	53
7.	EDI Test Cases	54
8.	Used Codes	56
8.1.	Booking Agent Response Code	56

8.2.	Contract Code	56
8.3.	Confirmation Code	56
8.4.	Country Code	56
8.5.	Equipment Code	56
8.6.	Error Code	57
8.7.	Hold Code	59
8.8.	Nationality Code	61
8.9.	Party Code	61
8.10.	Plug Code	64
8.11.	Rate Code	65
8.12.	Route Code	65
8.13.	Seal Code	67
8.14.	Shipment Status Code	67
8.15.	Terminal Code (Shipment Status Location)	69
8.16.	Pre-carriage Transport Mode Code	69
8.17.	On-carriage Transport Mode Code	69
8.18.	VAT Code	69
8.19.	Charge Code	70
8.20.	Document type Code	71
8.21.	Customs status Code	71
9.	IMDG	72
9.1.	DGD in .XML	72
9.2.	DGD in email attachment	74
10.	Waste Info	75
10.1.	Waste info .XML	75
11.	Consignment info	77
11.1.	Field description – ConsignmentRequest	78
11.2.	ConsignmentRequest example	90
11.3.	Consignment in the BookingRequest example	93
11.4.	Field description – ConsignmentReleaseRequest	96
11.5.	ConsignmentReleaseRequest example	97
11.6.	Feedback with consignment info	98
11.7.	Field description - Consignment info	101

11.8.	Consignment info - example	102
12.	Attachment	109
13.	Goods description – Guidelines	109
13.1.	General	109
13.2.	Oral Declaration For Empty Return Packaging / Racks / Loading Boards not subject to a sales transaction	110
14.	XML Invoicing	110
14.1.	XML invoicing layout	111
14.1.	Example Invoice response XML:	114

1. Introduction

This document describes the electronic data interchange flow of CLdN RoRo S.A.:

1. Create a request for the creation, modification and/or cancellation of a Booking;
2. Report the receipt of the Booking Request and the result of the validity check of the passed data;
3. Report feedback on the result of the processing of the Booking Request by the Booking Agent (approval or rejection);
4. Report the unit moves in the port of loading and the port of discharge.

Online application

There also is an online application (www.cweb.lu) where customers, who requested a login ID and password, can track and trace their cargo as well as launch booking requests. The validation of all booking requests (either launched by EDI or online) is done by the shipping line's Booking Agents.

1.1. Changes against the previous versions of this document

Version – Chapter	Change
VER 17.2 11.1 Field description ConsignmentRequest	typeOfGoods: no longer required
VER 17.2 8.7 Hold Code	Updated list
VER 17.2 8.5 Equipment Code	New equipment code: HCTR High Cube Trailer New equipment code: PJCA Project Cargo
VER 17.2 6.4 Field description Unit Moves	New tag: <subholdSet> Can be repeated New tag: <majorHoldCode> New tag: <majorHoldName> New tag: <minorHoldCode> New tag: <minorHoldName> Type of hold
VER 17.2 6.3 Field description Booking Request Feedback	New tag: <subholdSet> Can be repeated New tag: <subholdReleased> Can be repeated New tag: <majorHoldCode> New tag: <majorHoldName> New tag: <minorHoldCode> New tag: <minorHoldName> Type of hold
VER 17.1 11.1 Field description ConsignmentRequest	Eastbound (UK to NL) SPS-related cargo New tag: <ggbNumber> NUMERIC To provide a GGB-number when shipping from the UK to the Netherlands and declare SPS-related consignment items.
VER 17.1 11.1 Field description ConsignmentRequest	Restriction The total amount of packages in a booking may not exceed 99999
VER 17.0 11.7 Field description Consignment info	New Tag: <lloydsNr>: Number which identifies a specific ship. Unique to each ship.
VER 17.0 11.7 Field description Consignment info	New Tag: <conveyanceRefPol>: Conveyance Reference POL

VER 17.0	11.7 Field description Consignment info	New Tag: <conveyanceRefPod>: Conveyance Reference POD
VER 16.9	6.1.1 BookingRequestBody	New tag: <release> optional You can share the batch code of the release. CLdN sends this code to Destin8.
VER 16.8	6.1.1 BookingRequestBody	New tag: <finalDestination> To indicate what country the Cargo will ultimately arrive in.
VER 16.8	11.1 Field description ConsignmentRequest	Westbound (EU to UK) laden units New tag: <nominatedAgent> To indicate which Nominated Agent is used for each Consignment.
VER 16.7	11.1 Field description ConsignmentRequest	Westbound (EU to UK) laden units New tag: <spsInd> TRUE or FALSE To indicate that the consignment item is SPS.
VER 16.6	6.1 Booking Request field list	Westbound (EU to UK) ukBorderProcess: P & M can no longer be used for sailings from 01/01/2022 always use T
VER 16.6	11.1 Field description ConsignmentRequest	Westbound (EU to UK) typeOfGoods: S can no longer be used for sailings from 01/01/2022 always use C
VER 16.6	11.1 Field description ConsignmentRequest	Westbound (EU to UK) laden units New tag: <gvmsInd> for sailings from 01/01/2022 TRUE or FALSE To indicate that this consignment (gvms) is linked to the <GmrlId> in the booking
VER 16.6	6.1 Booking Request field list	Eastbound (UK to EU) ukBorderProcess: P can no longer be used for sailings from 01/01/2022
VER 16.6	11.1 Field description ConsignmentRequest	Only for Eastbound (UK to EU) laden units New tag: <transportDocumentType> & <transportDocumentNr> The transportDocumentType for this supplementary document can be: T1/T2/LRN(new)/ATA/TIR/302 This new tag is optional: When used: both the transportDocumentType and transportDocumentNr must be filled. (currently this docnr is communicated via the remarks field of the booking) This field reflects the “customs document” applicable to allow immediate clearance at the EU port of arrival (ie: when raising a T form in the UK) and is necessary due to no connection between the UK Customs systems and the NCTS system.
VER 16.6	11.1.1 ConsignmentRequest Matrix	Changes marked yellow
VER 16.6	Clarification sections	Clarification sections: 11.1.2, 11.1.3, 11.1.4, 11.1.5, 11.1.6 Clarification sections are reworked according to the 2022 regulations.

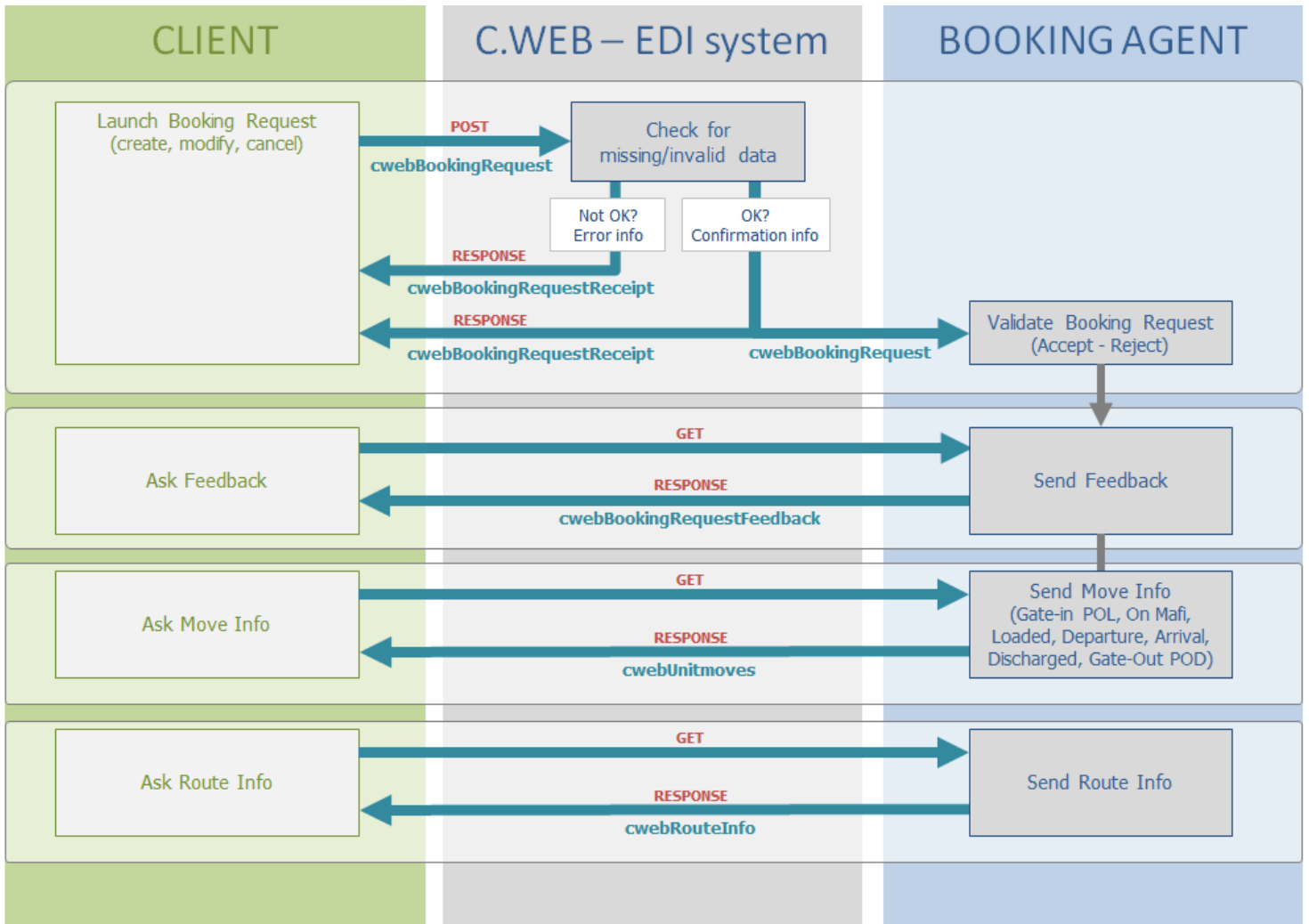
VER 16.6 6.1 Booking Request field list	Section: selfDriveInfo – driverPassengerInfo New tag: <passportCountryOfIssue>
VER 16.5 6.1.1 BookingRequestBody	ukBorderProcess: P = “Pre-Lodgement Border Model (non-inventory linked)” Added : Can no longer be used for Empty and RETURN goods units Eastbound from 01/10/2021.
VER 16.5 11.1.4. Clarification for units requiring EXS declaration	This section is updated according to the CLdN news letter “202109 – End of EXS Waiver UK”
VER 16.5 11.1.1. ConsignmentRequest Matrix	Consignment Mandatory dataset for UK Border Process Changed : Split for laden units & RETURN units
VER 16.4 6.1 Booking Request field list	New Eastbound ukBorderProcess: E = “Exit Summary Declaration” (always use docType EX for ukBorderProcess E)
VER 16.4 11 Consignment info	New: 11.1.4. Clarification for units requiring EXS declaration
VER 16.4 8.20. Document type Code	(02-04-2021) Added code: 2TL & T2F (SDR-LPL-DUB-SDR)
VER 16.4 6.1 Booking Request field list	(03-03-2021) Added – Check on Booking field cargoWeight Weight check with consignment items: <cargoWeight> of the unit cannot be less than the sum <grossWeight> of all consignment items on the unit.
VER 16.3 11. Consignment info	11.1.3. Clarification on Westbound (EU to UK) transit
VER 16.3 11. Consignment info	11.1.Field description – consignment request Consignee and Consignor changed from mandatory to conditional Added 11.1.2 Clarification on EORI numbers
VER 16.3 Naming changed in document	
<p>Type of Goods Standard & SCC EIDR Eligible Goods => Staged Customs Control EIDR Eligible Goods Controlled Goods, ROW Goods not previously.... => Goods Requiring Inventory Linked Declarations, Controlled Goods, Non-Union Goods</p> <p>Uk Border Process P – Prelodgement => Pre-Lodgement Border Model (non-inventory linked) T – Temporary Storage => Temporary Storage Border Model (Destin8 Inventory Linked) M - Movement under CTC – Office of Transit => EU – UK Transit to Final Destination (GVMS)</p>	

VER 16.3 6.1.1. bookingRequestBody	<p>Additional Uk Border Process options added for EASTBOUND:</p> <p>Eastbound:</p> <p>T = "Temporary Storage Border Model (Destin8 Inventory Linked)"</p> <p>P = "Pre-Lodgement Border Model (non-inventory linked)"</p> <p>1 = "UK – EU Transit –CLdN to Arrive Export"</p> <p>2 = 'UK – EU Transit–Declarant Arrives Export or "Landbridge" units'</p> <p>3 = 'UK – EU Transit – Including Office of Destination function'</p> <p>4 = 'UK – EU Transit - Including Office of Departure function & CLdN to Arrive Export'</p> <p>5 = 'UK-EU Transit – Including Office of Departure function & Declarant Arrives Export'.</p> <p>M = EU – UK Transit to Final Destination (GVMS)</p> <p>is not to be used for Eastbound.</p>
VER 16.2 11.1.1 ConsignmentRequest Matrix	<p>REMOVED on 16/11/2020</p> <p>"packageCode" removed from the Mandatory dataset for UK Border Process – Port of loading BE</p>
VER 16.2 6.1.1. bookingRequestBody	<p>ADDED: Tag "ukBorderProcess" refers to the Uk Border Process:</p> <p>T = "Temporary Storage Border Model (Destin8 Inventory Linked)"</p> <p>P = "Pre-Lodgement Border Model (non-inventory linked)"</p> <p>M = "EU – UK Transit to Final Destination (GVMS)"</p>
VER 16.2 6.1.1. bookingRequestBody	<p>ADDED: Tag "gmri" Goods Movement Reference (Mandatory for ukBorderProcess M)</p>
VER 16.2 6.1.1. bookingRequestBody	<p>Option "clearanceRequired" no longer available after Brexit</p>
VER 16.2 11.1 Field description – ConsignmentRequest	<p>ADDED: Tag "<typeOfGoods>"</p> <p>C = 'Controlled goods'</p> <p>S = 'Standard & SCC EIDR Eligibile goods'</p> <p>(Mandatory for Westbound – Import UK)</p>
VER 16.2 8.22 Type of Goods	<p>ADDED: 8.22. "typeOfGoods"</p> <p>C = 'Controlled goods'</p> <p>S = 'Standard & SCC EIDR Eligibile goods'</p>
VER 16.2 11.1 Field description – ConsignmentRequest	<p>EXTRA CONDITION</p> <p>The consignee "EORI" is mandatory when in the bookingRequestBody ukBorderProc is 'P' or'M' for a shipment to the UK.</p>
VER 16.2 11.1 Field description – ConsignmentRequest	<p>When EORI is used for consignee, consignor or notify:</p> <p>If port of discharge is EU → EU EORI number must be used</p> <p>If Port of discharge is UK → UK EORI number must be used</p>
VER 16.2 11.1.1 ConsignmentRequest Matrix	<p>ADDED:</p> <p>11.1.1. Consignment Mandatory dataset for UK Border Process</p>
VER 16.2 11.1 Field description – ConsignmentRequest	<p>consignmentId – change field length from AN/10 to AN/12</p>

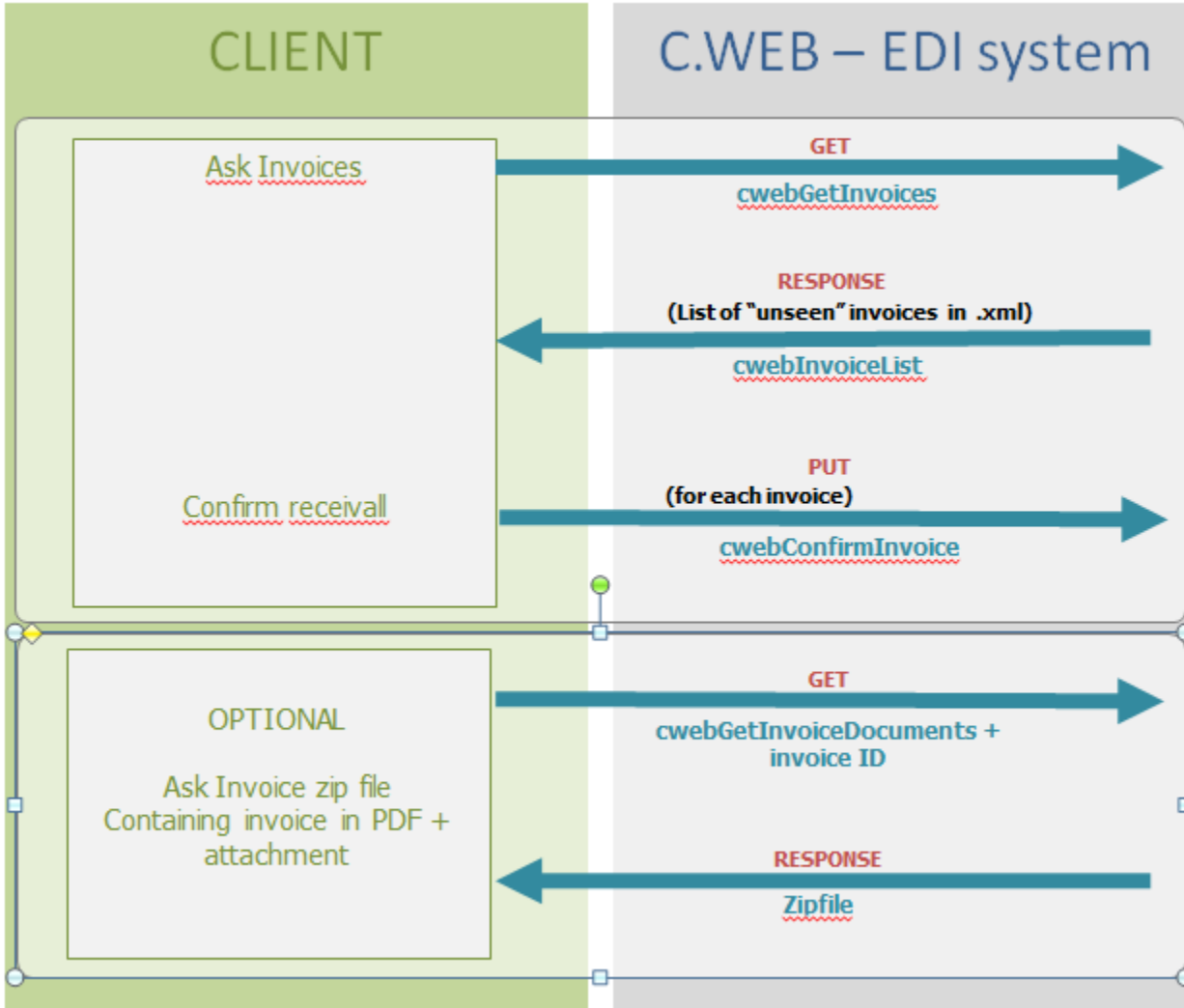
VER 16.1 6.1.1. bookingRequestBody	ADDED: Tag: "customsStatus" Mandatory for RSS (Regular Shipping Service)
VER 16.1 6.1.1. bookingRequestBody Page 34	REMOVED: Section "customsInfo" with the related tags: "documentType", "documentNumber" & "validToLocation". The use of the customsInfo will be stopped (planned September 2020) The document details will need to be entered in Consignments. See section 11. Consignment info.
VER 16.1 8.21 Custom status Code Page 60	ADDED: 8.21. Customs status Code – list of codes with description
VER16.1 11.1 Field description – ConsignmentRequest Page 67	REMOVED: Tag "cstmEntryProcTp" (in consignmentInfo).
VER 16.1 6.5. Route Info field list 3.6. Route Info Page 46 & Page 9	ADDED: Tag "rssPermit" & tag "etdPermit"
VER 16.0 13.2 goods description logic	Added (BREXIT related) 13.2 Oral Declaration For Empty Return Packaging / Racks / Loading Boards not subject to a sales transaction
VER 16.0 11 Consignment Info	TAG <ensReference> changed to <consignmentReferenceNumber> (logic remains only the name of the tag has been changed)

2. EDI - Flow charts

Booking



Invoicing



3. Concept

3.1. Booking Request

Client can create **requests** for creation, modification or cancellation of a booking.

3.2. Booking Request Receipt

The C.WEB EDI system (the computer system of the ferry line) performs an instantaneous validity check on the passed data and immediately returns a **Booking Request Receipt** as response to your request.

An “Invalid” receipt indicates that your request contains an error and cannot be processed.

A “valid” receipt is merely a confirmation that your request was received correctly. At that moment it is still a request.

3.3. Processing by Booking Agent

At some later point in time (typically a few minutes later), the request is processed by the Booking Agent. He will either approve the request (e.g. a create request will become an actual booking), or reject it (e.g. a modification request is not honored, and the booking remains as-is).

3.4. Booking Request Feedback

Client should regularly (typically every 10 to 15 minutes) ask for feedback to enquire the status of their pending booking requests and actual bookings. The EDI system will reply with a message containing all changes to your bookings or booking requests since the last time you requested feedback.

Feedback information is sent for every change in your bookings, whether or not that change resulted from an EDI request that you sent. These are the possible changes and examples of their cause:

- **created:** your create request was approved by the agent, or a booking was created by the agent, e.g. after receiving an e-mail or fax.
- **modified:** your modification request was approved by the agent, or a modification was made by the agent, e.g. transfer of booking after a no-show.
- **cancelled:** your cancellation request was approved by the agent, or an agent cancelled this booking e.g. after phone call by customer.
- **rejected:** your request (creation, cancellation, modification) was rejected by the agent. The feedback message will contain a reason for the rejection.

Note:

- If there are no changes since the last time you got feedback, you receive an empty feedback response.
- If for a specific booking there have been 2 or more changes since last time, you will only get the last information.
- With each mentioned booking, the Feedback message includes the full current state of that booking (the so-called ‘current booking info’). No ‘current booking info’ is available in case of a cancellation of a booking (i.e. the booking no longer exists), or if the agent rejected a new create request (i.e. the booking doesn’t exist yet)
- In case we receive multiple requests regarding the same unit (the same ‘client ref’), no feedback is returned until all outstanding Booking Requests for that unit are processed by the Booking Agent.

3.5. Unit Moves

Clients may send a request to receive Unit Move information. As a result, the following types of moves are reported by the EDI system:

Checked in	The cargo is checked in at the port of loading
------------	--

On mafi	The cargo is put on a mafi (a type of cart with wheels to transport any type of cargo to/from the ship)
On board	The cargo is loaded on board of the vessel
Sailed	The vessel with the cargo has sailed from the port of loading.
Arrived	The vessel with the cargo has arrived in the port of discharge.
Discharged	The cargo is discharged from the vessel at the port of discharge
Exgated	The cargo has left the port of discharge

3.6. Route Info

Clients may send a request to receive sailing schedule information for a specific route. As a result, the following information is reported by the EDI system:

File	The internal file number of the sailing
shipId	The vessel's short name
shipName	The vessel's full name
sailingDate	The date of departure in the port of loading
sailingTime	The time of departure in the port of loading
arrivalDate	The date of arrival in the port of discharge
arrivalTime	The time of arrival in the port of discharge
operatedBy	The company that operates the cargo (shipping line's short name)
rssPermit	The shipping line has a Regular Shipping Service Permit
etdPermit	The shipping line has an ETD permit

3.7. Timestamps

All timestamps in the EDI interface are in the time zone notation of the location **where the action is initiated**:

- Moves = time of the location where the move is registered.
- Sailings = local time of the port of departure / arrival.

4. Transmission

HTTPS

Communication between client and the C.WEB EDI system happens via HTTPS.

HTTPS is a networking protocol used throughout the internet. It is well known for its use in internet browsers, for instance on-line banking, secure payment transactions etc.

Basically it is an extension to HTTP that provides encrypted communication and secure identification of a network web server.

Most programming languages and environments provide simple API's that allow easy implementation of HTTPS communication. Please consult your programming language / API for more information on how this is done in your programming environment.

HTTPS communication is always initiated by the client. It sends a request, and the server sends a response. C.WEB EDI utilizes both GET and POST request methods. GET methods are used for simple queries, whereas POST methods are used when additional XML files need to be included in the request. The response is always an XML structure that either contains the requested information, or a structured error message.

The exact XML structures are explained in the next chapters of this document.

To be able to start EDI transmission, clients will have to request an EDI user name and password – it is not possible to start EDI transmission with the logon credentials for the online C.WEB tool.

Authentication

Authentication happens through so called 'Basic Access Authentication'.

Basically you must pass a valid, authorized user name and password with each request. Failing to do so will result in an error response with HTTP status code 401 (authentication required) or 403 (not authorized). Please consult your programming language / API for more information on how this is done in your programming environment.

XML

In an XML file no special characters like **&**, **"**, **'**, **<** or **>** are allowed in the 'data', as they might be confusing: it isn't clear what is 'data' and what is 'markup'.

These special characters should be replaced before inserting them in the data parts of the XML message:

- **<**; represents "<"
- **>**; represents ">"
- **&**; represents "&"
- **'**; represents "'
- **"**; represents ""

Example: the Name tag should read: `<name>Laurel & Hardy Ltd.</name>`

instead of: `<name> Laurel & Hardy Ltd.</name>`

For most of the programming languages examples exist on the internet. We suggest to search for "escape XML + [your programming language]" with any online search engine (e.g. Google).

This problem can occur in every tag with alphanumeric data. Best thing to do is to cover it with a general routine.

When receiving data you should basically do the same exercise in reverse order (if applicable).

5. Messages

5.1. cwebBookingRequest

5.1.1.URL

<https://www.cweb.lu/edi/cwebBookingRequest> (POST method)

5.1.2.POST data sent with URL

You must include an XML message as POST data with your booking request.
The structure of this message is:

- One header tag
- One or more create, modify, createOrModify or cancel tags

NOTE:

The createOrModify instruction will cause a create request if the booking doesn't exist yet, OR will cause a modification request if the booking already exists.

```
<?xml version="1.0"?>
<cwebBookingRequest version="1.0">
  <header>...
  <create>
    <bookingRequestBody>...
  </create>
  <modify>
    <bookingRequestBody>...
  </modify>
  <cancel>
    <cancelBookingRequestBody>...
  </cancel>
</cwebBookingRequest>
```

5.1.2.1. Client Header

```
<header>
  <senderID>ABC</senderID>
  <receiverID>CWEB</receiverID>
  <replyMail replyEvent='rejected'>edisupport@abc.com</replyMail>
  <msgDate>20110325</msgDate>
  <msgTime>14:40:05</msgTime>
  <msgReference>ABC-4456-23</msgReference>
</header>
```

NOTE:

Inside the <replyMail> tag in the header it is possible to add a 'replyEvent' parameter with the following values: 'rejected', 'transferred', 'approved', 'invalid' or a comma-separated combination of those, or 'none' to send no mails. Default is 'none'. Other values are ignored.

When 'invalid' is used, an email will be sent when the request is not correctly created or when the initial XML is directly refused because of wrong content (e.g. invalid port of loading, temperature is not a numeric value,...).

e.g. <replyMail replyEvent='rejected,transferred,invalid'>edisupport@abc.com</replyMail>

The only purpose of the <replyMail> tag is to transmit feedback from the booking agent to the client. NO mail is sent to report that the request was not successfully created. That is communicated via the 'BookingRequestReceipt' message.

5.1.2.2. Contact details (optional)

Per booking request (create/modify/cancel) you can specify name, phone number and/or e-mail address of the person responsible for the given booking. This information will be visible to our agents so they know who to contact in case of questions. Contact tags are optional.

```
<create>
  <contactName>John</contactName>
  <contactPhone>01/234567</contactPhone>
  <contactEmail>john@foo.com</contactEmail>
  <bookingRequestBody>
```

5.1.2.3. bookingRequestBody

```
<bookingRequestBody>
  <clientReference>ABC:123:45</clientReference>
  <shippingLineReference>56874921/5</shippingLineReference>
  <transportOrderReference>4772934</transportOrderReference>
  <contractCode>ABC</contractCode>
  <routeCode>RTMDUB</routeCode>
  <shipsOptionInd>FALSE</shipsOptionInd>
  <sailingDate>20110330</sailingDate>
  <sailingTime>14:40</sailingTime>
  <equipmentCode>SELF</equipmentCode>
  <unitNumber>BTS8112</unitNumber>
  <iluCode>DFDG0067111</iluCode>
  <fullInd>TRUE</fullInd>
  <customsStatus>T</customsStatus>
  <goodDescription>Marmelade</goodDescription>
  <measurementInfo>
    <length>13.60</length>
    <tareWeight>5500</tareWeight>
    <cargoWeight>20000</cargoWeight>
    <vgm>18620</vgm>
    <vgmResponsible>JAMES BOND</vgmResponsible>
    <width>3.5</width>
    <height>4.2</height>
  </measurementInfo>
```



```

<wasteInd>>true</wasteInd>
<animalByproductInd>>false</animalByproductInd>
  <lateArrivalInd>FALSE</lateArrivalInd>
  <deliveryDate>20110330</deliveryDate>
  <noStackAtArrivalInd>FALSE</noStackAtArrivalInd>
  <hazardousInfo>
    <unNumber>5564</unNumber>
    <classNum>3</classNum>
    <packingGroup>2</packingGroup>
    <limitedQuantInd>FALSE</limitedQuantInd>
  </hazardousInfo>
  <temperatureInfo>
    <temperature>-5</temperature>
    <mintemperature>-6</mintemperature>
    <maxtemperature>-4</maxtemperature>
    <plugAtPortOfLoadingCode>Y</plugAtPortOfLoadingCode>
    <plugOnVesselCode>N</plugOnVesselCode>
    <plugAtPortOfDischargeCode>M</plugAtPortOfDischargeCode>
  </temperatureInfo>
  <sealInfo>
    <sealTypeCode>CA</sealTypeCode>
    <sealNumber>4587</sealNumber>
  </sealInfo>
  <sealInfo>
    <sealTypeCode>CU</sealTypeCode>
    <sealNumber>566237</sealNumber>
  </sealInfo>
  <clearanceRequired>FALSE</clearanceRequired >
  <remarks>CONTAINS GLASS</remarks>
  <partyInfo>
    <partyCode>CONSIGNEE</partyCode>
    <name>BOSTON ltd</name>
    <address>Roadhouse52</address>
    <countryCode>IE</countryCode>
    <city>DUBLIN</city>
    <vat>BE11111111</vat>
  </partyInfo>
  <partyInfo>
    <partyCode>NOTIFY</partyCode>
    <name>Mr. Willis</name>
    <address>Roadhouse 52</address>
  </partyInfo>
  <preOnCarriageInfo>
    <preCarriageTransportModeCode>RL</preCarriageTransportModeCode>
    <estimatedDateOfArrival>20110322</estimatedDateOfArrival>
    <onCarriageTransportModeCode>RL</onCarriageTransportModeCode>
    <estimatedDateOfDeparture>20110326</estimatedDateOfDeparture>
  </preOnCarriageInfo>
  <selfDriveInfo>
    <transportCompany>BESTTRANS</transportCompany>
    <transportLicensePlate>555KGH</transportLicensePlate>
    <transportCountryCode>BE</transportCountryCode>
    <driverPassengerInfo>
      <lastName>VERMEULEN</lastName>
    </driverPassengerInfo>
  </selfDriveInfo>

```

```
<firstName>JOS</firstName>  
<passportNumber>123-54447745-96</passportNumber>  
<nationalityCode>BE</nationalityCode>  
<placeOfBirth>DEURNE</placeOfBirth>  
<dateOfBirth>19640826</dateOfBirth>  
<gender>M</gender>  
<passportExpiryDate>20160930</passportExpiryDate>  
< passportCountryOfIssue>BE</passportCountryOfIssue>  
</driverPassengerInfo>  
</selfDriveInfo>  
</bookingRequestBody>
```

TIP regarding Hazardous info: include your DGD info in the XML or send your DGD via email and link it with your request! See '9. IMDG'

5.1.2.4. cancelBookingRequestBody

```
<cancelBookingRequestBody>  
<clientReference>ABC:123:45</clientReference>  
<shippingLineReference>56874921/5</shippingLineReference>  
</cancelBookingRequestBody>
```

5.1.3. Response received from URL

You receive an XML message as response to your booking request (the “Booking Request Receipt”). The structure of this message is:

- One header tag
- One or more receipt tags with either confirmation info or error info.

```
<?xml version="1.0"?>
<cwebBookingRequestReceipt version="1.0">
  <header>...
  <receipt>...
  <receipt>...
</cwebBookingRequestReceipt>
```

5.1.3.1. EDI Header

```
<header>
  <senderID>CWEB</senderID>
  <receiverID>ABC</receiverID>
  <replyMail>webmaster@cweb.lu</replyMail>
  <msgDate>20110325</msgDate>
  <msgTime>14:40:05</msgTime>
  <msgReference>45585</msgReference>
</header>
```

5.1.3.2. “Valid” Receipt

```
<receipt>
  <clientReference>ABC:123:45</clientReference>
  <shippingLineReference>56874921/5</shippingLineReference>
  <bookingRequestId>25548</bookingRequestId>
  <transportOrderReference>4772934</transportOrderReference>
  <confirmationInfo>
    <confirmationCode>OK</confirmationCode>
    <confirmationDescription>Descriptionofconfirmation</confirmationDescription>
  </confirmationInfo>
</receipt>
```

5.1.3.3. “Invalid” Receipt

```
<receipt>
  <clientReference>ABC:123:45</clientReference>
  <shippingLineReference>56874921/5</shippingLineReference>
  <bookingRequestId>25548</bookingRequestId>
  <transportOrderReference>4772934</transportOrderReference>
  <errorInfo>
    <errorCode>1000</errorCode>
    <errorDescription>Descriptionoferror</errorDescription>
  </errorInfo>
</receipt>
```

```
</errorInfo>
</receipt>
```

5.2. cwebBookingRequestFeedback

5.2.1.URL

<https://www.cweb.lu/edi/cwebBookingRequestFeedback> (GET method)

5.2.2.Response received from URL

The structure of the Booking Request Feedback response is:

- One header tag
- Zero or more created, modified, cancelled, or requestRejected tags
- Current booking info tags and error info tags

```
<?xml version="1.0"?>
<cwebBookingRequestFeedback version="1.0">
  <header>...
  <created>
    <clientReference>ABC:123</clientReference>
    <shippingLineReference>32477966/4</shippingLineReference>
    <bookingRequestId>78977</bookingRequestId>
    <transportOrderReference>4772934</transportOrderReference>
    <currentBookingInfo>...
  </created>
  <modified>...
  <cancelled>...
  <requestRejected>...
</cwebBookingRequestFeedback>
```

5.2.2.1. EDI Header

Same as 5.1.3.1 EDI Header.

5.2.2.2. CurrentBookingInfo

```
<currentBookingInfo>
  <bookingRequestBody>
    <clientReference>ABC:123:45</clientReference>
    <shippingLineReference>56874921/5</shippingLineReference>
    <transportOrderReference>4772934</transportOrderReference>
    <contractCode>ABC</contractCode>
    <routeCode>RTMDUB</routeCode>
    <shipsOptionInd>FALSE</shipsOptionInd>
    <sailingDate>20110330</sailingDate>
    <sailingTime>14:40</sailingTime>
    <equipmentCode>SELF</equipmentCode>
```

```

<unitNumber>BTS8112</unitNumber>
<iluCode>DFDG0067111</iluCode>
<fullInd>TRUE</fullInd>
<customsStatus>T</customsStatus>
<goodDescription>Marmelade</goodDescription>
<measurementInfo>
  <length>13.60</length>
  <tareWeight>5500</tareWeight>
  <cargoWeight>20000</cargoWeight>
  <vgm>18620</vgm>
  <vgmResponsible>JAMES BOND</vgmResponsible>
  <width>3.5</width>
  <height>4.2</height>
</measurementInfo>
<lofolInd>FALSE</lofolInd>
<urgencyInd>TRUE</urgencyInd>
<wasteInd>true</wasteInd>
<animalByproductInd>>false</animalByproductInd>
<deliveryDate>20110330</deliveryDate>
<noStackAtArrivalInd>FALSE</noStackAtArrivalInd>
<hazardousInfo>
  <unNumber>5564</unNumber>
  <classNum>3</classNum>
  <packingGroup>2</packingGroup>
  <limitedQuantInd>FALSE</limitedQuantInd>
</hazardousInfo>
<temperatureInfo>
  <temperature>-5</temperature>
  <mintemperature>-6</mintemperature>
  <maxtemperature>-4</maxtemperature>
  <plugAtPortOfLoadingCode>Y</plugAtPortOfLoadingCode>
  <plugOnVesselCode>N</plugOnVesselCode>
  <plugAtPortOfDischargeCode>M</plugAtPortOfDischargeCode>
</temperatureInfo>
<sealInfo>
  <sealTypeCode>CA</sealTypeCode>
  <sealNumber>4587</sealNumber>
</sealInfo>
<sealInfo>
  <sealTypeCode>CU</sealTypeCode>
  <sealNumber>566237</sealNumber>
</sealInfo>
<clearanceRequired>FALSE</clearanceRequired >
<remarks>CONTAINS GLASS</remarks>
<partyInfo>
  <partyCode>SHIPPER</partyCode>
  <name>TRANSLINK</name>
  <address>OPINELSTRAAT 41</address>
  <address2>BOX 20</address2>
  <countryCode>BE</countryCode>
  <city>ANTWERP</city>
</partyInfo>
<partyInfo>
  <partyCode>CONSIGNEE</partyCode>

```

```

        <name>BOSTON ltd</name>
        <address>Roadhouse52</address>
        <countryCode>IE</countryCode>
        <city>DUBLIN</city>
        <vat>BE11111111</vat>
    </partyInfo>
    <partyInfo>
        <partyCode>NOTIFY</partyCode>
        <name>Mr. Willis</name>
        <address>Roadhouse 52</address>
    </partyInfo>
    <preOnCarriageInfo>
        <preCarriageTransportModeCode>RL</preCarriageTransportModeCode>
        <estimatedDateOfArrival>20110322</estimatedDateOfArrival>
        <onCarriageTransportModeCode>RL</onCarriageTransportModeCode>
        <estimatedDateOfDeparture>20110326</estimatedDateOfDeparture>
    </preOnCarriageInfo>
    <selfDriveInfo>
        <transportCompany>BESTTRANS</transportCompany>
        <transportLicensePlate>555KGH</transportLicensePlate>
        <transportCountryCode>BE</transportCountryCode>
        <driverPassengerInfo>
            <lastName>VERMEULEN</lastName>
            <firstName>JOS</firstName>
            <passportNumber>123-54447745-96</passportNumber>
            <nationalityCode>BE</nationalityCode>
            <placeOfBirth>DEURNE</placeOfBirth>
            <dateOfBirth>19640826</dateOfBirth>
        </driverPassengerInfo>
        <gender>M</gender>
        <passportExpiryDate>20160930</passportExpiryDate>
        <passportCountryOfIssue>BE</passportCountryOfIssue>
    </selfDriveInfo>
</bookingRequestBody>
<shippingLine>CLDN</shippingLine>
<fileNumber>1.54.210</fileNumber>
<vesselName>Amandine</vesselName>
<pinCode>4512</pinCode>
<shipmentStatusCode>Booked</shipmentStatusCode>
<standbyInd>TRUE</standbyInd>
<otherSailingInd>FALSE</otherSailingInd>
<rateCode>STANDARD</rateCode>
<bookingAgentResponseCode>9999</bookingAgentResponseCode>
<bookingAgentResponseComment>Comment by agent</bookingAgentResponseComment>
<holdSet>
    <holdCode>IMDG</holdCode>
    <holdComment>optional remark by agent</holdComment>
</holdSet>
<holdReleased>
    <holdCode>IMDG</holdCode>
    <holdComment>optional remark by agent</holdComment>
</holdReleased>

```

```
<subholdSet>
  <majorHoldCode>A</majorHoldCode>
  <majorHoldName>Agency</majorHoldName>
  <minorHoldCode>IMDG</minorHoldCode>
  <minorHoldName>IMDG</minorHoldName>
  <holdComment>optional remark by agent</holdComment>
</subholdSet>
<subholdReleased>
  <majorHoldCode>A</majorHoldCode>
  <majorHoldName>Agency</majorHoldName>
  <minorHoldCode>IMDG</minorHoldCode>
  <minorHoldName>IMDG</minorHoldName>
  <holdComment>optional remark by agent</holdComment>
</subholdReleased>
</currentBookingInfo>
```

TIP regarding Hazardous info: include your DGD info in the XML or send your DGD via email and link it with your request! See '9. IMDG'

Hold info: the set or released hold info is always sent in the feedback message. Only if the hold is set and released between two feedback messages, then hold info is not sent, because the second action neutralizes the first.

5.2.2.3. ErrorInfo

```
<errorInfo>
  <errorCode>3123</errorCode>
  <errorDescription>Description of error</errorDescription>
</errorInfo>
```

5.3. cwebUnitMoves

5.3.1.URL

<https://www.cweb.lu/edi/cwebUnitMoves> (GET method)

5.3.2.Response received from URL

The structure of the unit moves response is:

- One header tag
- One or more shipment tags, each with one or more moves

```
<?xml version="1.0"?>
<cwebUnitMoves version="1.0">
  <header>...
  <shipment>...
</cwebUnitMoves>
```

5.3.2.1. EDI Header

Same as 5.1.3.1 EDI Header.

5.3.2.2. Shipment

```
<shipment>
  <clientReference>ABC:123:45</clientReference>
  <shippingLineReference>56874921/5</shippingLineReference>
  <transportOrderReference>4772934</transportOrderReference>
  <shippingLine>CLDN</shippingLine>
  <fileNumber>1.54.210</fileNumber>
  <routeCode>RTMDUB</routeCode>
  <vesselName>Amandine</vesselName>
  <unitNumber>BTS8112</unitNumber>
  <bookedViaCweb>true</bookedViaCweb>
  <pluggedOnVessel>>false</pluggedOnVessel>
  <holdSet>
    <holdCode>IMDG</holdCode>
    <holdComment>optional remark by agent</holdComment>
  </holdSet>
  <subholdSet>
    <majorHoldCode>A</majorHoldCode>
    <majorHoldName>Agency</majorHoldName>
    <minorHoldCode>IMDG</minorHoldCode>
    <minorHoldName>IMDG</minorHoldName>
    <holdComment>optional remark by agent</holdComment>
  </subholdSet>
  <move>
    <shipmentStatusCode>Sailed</shipmentStatusCode>
    <shipmentStatusDate>20110325</shipmentStatusDate>
    <shipmentStatusTime>14:40</shipmentStatusTime>
    <shipmentStatusLocation>ZEE</shipmentStatusLocation>
    <shipmentStatusLocationTerminal>BRIT</shipmentStatusLocationTerminal>
```



```
<estArrivalDate>20120214</estArrivalDate>  
<estArrivalTime>20:15</estArrivalTime>  
<transportCompany></transportCompany>  
<transportLicensePlate></transportLicensePlate>  
</move>  
</shipment>
```

Hold info: in the Moves messages only the currently active (not yet released) holds are sent.

5.4. cwebRouteInfo

5.4.1. URL

<https://www.cweb.lu/edi/cwebRouteInfo?route=POLPOD> (GET method)

5.4.2. Structure

The Route Info message lists all sailings that are open at the moment the list is requested.

```
<?xml version="1.0"?>
<cwebRouteInfo route="ZEEPUR" version="1.0">
  <header>...
  <sailing>...
</cwebRouteInfo>
```

5.4.2.1. EDI Header

Same as 5.1.3.1 EDI Header.

5.4.2.2. Sailing

```
<sailing>
  <file>201256622</file>
  <shipId>VALE</shipId>
  <shipName>VALENTINE</shipName>
  <sailingDate>20120912</sailingDate>
  <sailingTime>16:00</sailingTime>
  <arrivalDate>20120913</arrivalDate>
  <arrivalTime>02:00</arrivalTime>
  <operatedBy>COBFERAN</operatedBy>
  <rssPermit>TRUE</rssPermit>
  <etdPermit>FALSE</etdPermit>
</sailing>
<sailing>
  <file>200754820</file>
  <shipId>MELU</shipId>
  <shipName>MELUSINE</shipName>
  <sailingDate>20290724</sailingDate>
  <sailingTime>11:00</sailingTime>
  <arrivalDate>20290724</arrivalDate>
  <arrivalTime>13:00</arrivalTime>
  <operatedBy>COBFERAN</operatedBy>
  <rssPermit>TRUE</rssPermit>
  <etdPermit>FALSE</etdPermit>
</sailing>
```

5.5. MessageRejected

If there is a major error with the EDI request (i.e. wrong URL, XML syntax is incorrect,...), the client receives the following answer:

```
<?xml version="1.0"?>
<messageRejected>
  <header>...</header>
  <errorCode>1XXX or 2XXX</errorCode>
  <errorDescription>some text about the problem</errorDescription>
</messageRejected>
```

5.6. InternalError

If there is an internal error (bug, abort,...) in the handling of the EDI message, the client receives the following message:

```
<?xml version="1.0"?>
<internalError>
  <errorCode>0XXX</errorCode>
  <errorDescription>...</errorDescription>
</internalError>
```

Please note that in this case NO header is sent back.

5.7. Response examples

Below are some example response messages. Note that the layout/formatting is just for readability.

5.7.1.cwebBookingRequest response example (OK response):

```
<?xml version="1.0" encoding="UTF-8"?>
<cwebBookingRequestReceipt version="1.0">
  <header>
    <senderID>CWEB</senderID>
    <receiverID>XXXX</receiverID>
    <replyMail>webmaster@cweb.lu</replyMail>
    <msgDate>20140508</msgDate>
    <msgTime>10:00:00</msgTime>
    <msgReference>20140508100000_01_00002352</msgReference>
  </header>
  <receipt>
    <clientReference>XXXX</clientReference>
    <bookingRequestId>1449437</bookingRequestId>
    <confirmationInfo>
      <confirmationCode>OK</confirmationCode>
    </confirmationInfo>
  </receipt>
</cwebBookingRequestReceipt>
```

5.7.2.cwebBookingRequest response example (error response):

```
<?xml version="1.0" encoding="UTF-8"?>
<cwebBookingRequestReceipt version="1.0">
  <header>
    <senderID>CWEB</senderID>
    <receiverID>XXXX</receiverID>
    <replyMail>webmaster@cweb.lu</replyMail>
    <msgDate>20140508</msgDate>
    <msgTime>10:03:27</msgTime>
    <msgReference>20140508100327_01_00002414</msgReference>
  </header>
  <receipt>
    <clientReference>XXXX</clientReference>
    <transportOrderReference>XXXX</transportOrderReference>
    <errorInfo>
      <errorCode>2008</errorCode>
      <errorDescription>Client Reference XXXX is already in use on a Central Europe-Ireland
        booking (see Shipping Line Reference 34330308/4)</errorDescription>
    </errorInfo>
  </receipt>
</cwebBookingRequestReceipt>
```

5.7.3.cwebBookingRequestFeedback response example (no units to report):

```
<?xml version="1.0" encoding="utf-8"?>
<cwebBookingRequestFeedback version="1.0">
  <header>
    <senderID>CWEB</senderID>
    <receiverID>XXXX</receiverID>
    <replyMail>webmaster@cweb.lu</replyMail>
    <msgDate>20131104</msgDate>
    <msgTime>11:01:26</msgTime>
    <msgReference>20131104110123_01_00001168</msgReference>
  </header>
</cwebBookingRequestFeedback>
```

5.8. cwebBookingRequestFeedback response example (several units to report):

```
<?xml version="1.0" encoding="utf-8"?>
<cwebBookingRequestFeedback version="1.0">
  <header>
    <senderID>CWEB</senderID>
    <receiverID>XXXX</receiverID>
    <replyMail>webmaster@cweb.lu</replyMail>
    <msgDate>20131104</msgDate>
    <msgTime>11:00:13</msgTime>
    <msgReference>20131104110010_02_00000352</msgReference>
  </header>
  <modified>
    <clientReference>XXXX</clientReference>ob
    <shippingLineReference>33344979/2</shippingLineReference>
    <bookingRequestId>973633</bookingRequestId>
    <currentBookingInfo>
      <bookingRequestBody>
        <clientReference>XXXX</clientReference>
        <shippingLineReference>33344979/2</shippingLineReference>
        <contractCode>XXXX</contractCode>
        <routeCode>ZEEKGH</routeCode>
        <shipsOptionInd>false</shipsOptionInd>
        <sailingDate>20220105</sailingDate>
        <sailingTime>20:30</sailingTime>
        <arrivalDate>20220106</arrivalDate>
        <arrivalTime>08:00</arrivalTime>
        <equipmentCode>CONT</equipmentCode>
        <fullInd>true</fullInd>
          <customsStatus>R</customsStatus>
          <ukBorderProcess>T</ukBorderProcess>
        <gmrlId>GMRI00002KW2</gmrlId>
        <goodDescription>cosmetics</goodDescription>
        <measurementInfo>
          <length>13.71</length>
          <tareWeight>4260</tareWeight>
          <cargoWeight>16500</cargoWeight>
        </measurementInfo>
        <lofoInd>false</lofoInd>
        <urgencyInd>false</urgencyInd>
```

```

<lateArrivalInd>>false</lateArrivalInd>
<noStackAtArrivalInd>>false</noStackAtArrivalInd>
<hazardousInfo>
  <unNumber>9999</unNumber>
  <classNum>3</classNum>
  <packingGroup>2</packingGroup>
  <limitedQuantInd>>false</limitedQuantInd>
</hazardousInfo>
<partyCode>CONSIGNEE</partyCode>
<name>XXXX</name>
<countryCode>BE</countryCode>
  <vat>BE11111111</vat>
</partyInfo>
</bookingRequestBody>
<shippingLine>CLdN ro-ro sa</shippingLine>
<fileNumber>3.37.618</fileNumber>
<vesselName>Pauline</vesselName>
<pinCode>9999</pinCode>
<shipmentStatusCode>Booked</shipmentStatusCode>
<standbyInd>>false</standbyInd>
<otherSailingInd>>false</otherSailingInd>
</currentBookingInfo>
</modified>
<created>
  <clientReference>XXXX</clientReference>
  <shippingLineReference>33344998/3</shippingLineReference>
  <bookingRequestId>974092</bookingRequestId>
  <currentBookingInfo>
    <bookingRequestBody>
      <clientReference>XXXX</clientReference>
      <shippingLineReference>33344998/3</shippingLineReference>
      <contractCode>XXXX</contractCode>
      <routeCode>ZEEKGH</routeCode>
      <shipsOptionInd>>false</shipsOptionInd>
      <sailingDate>20131105</sailingDate>
      <sailingTime>20:30</sailingTime>
      <arrivalDate>20131106</arrivalDate>
      <arrivalTime>08:00</arrivalTime>
      <equipmentCode>CONT</equipmentCode>
      <fullInd>>true</fullInd>
      <customsStatus>R</customsStatus>
      <ukBorderProcess>T</ukBorderProcess>
    <gmrlId>GMR100002KW2</gmrlId>
    <goodDescription>lubricating oils</goodDescription>
    <measurementInfo>
      <length>13.71</length>
      <tareWeight>4260</tareWeight>
      <cargoWeight>20000</cargoWeight>
    </measurementInfo>
    <lofoInd>>false</lofoInd>
    <urgencyInd>>false</urgencyInd>
    <lateArrivalInd>>false</lateArrivalInd>
    <noStackAtArrivalInd>>false</noStackAtArrivalInd>
  </partyInfo>

```

```
<partyCode>CONSIGNEE</partyCode>
<name>XXXX</name>
<countryCode>BE</countryCode>
  <vat>BE11111111</vat>
</partyInfo>
</bookingRequestBody>
<shippingLine>CLdN ro-ro sa</shippingLine>
<fileNumber>3.37.618</fileNumber>
<vesselName>Pauline</vesselName>
<pinCode>9999</pinCode>
<shipmentStatusCode>Booked</shipmentStatusCode>
<standbyInd>>false</standbyInd>
<otherSailingInd>>false</otherSailingInd>
</currentBookingInfo>
</created>
</cwebBookingRequestFeedback>
```

5.9. cwebUnitMoves response example

```

<?xml version="1.0" encoding="UTF-8"?>
<cwebUnitMoves version="1.0">
  <header>
    <senderID>CWEB</senderID>
    <receiverID>XXXX</receiverID>
    <replyMail>webmaster@cweb.lu</replyMail>
    <msgDate>20140508</msgDate>
    <msgTime>00:06:05</msgTime>
    <msgReference>20140508000604_01_00000017</msgReference>
  </header>
  <shipment>
    <clientReference>XXXX</clientReference>
    <shippingLineReference>34294993/3</shippingLineReference>
    <transportOrderReference>XXXX</transportOrderReference>
    <shippingLine>CLDN</shippingLine>
    <fileNumber>4.55.220</fileNumber>
    <routeCode>ZEEPUR</routeCode>
    <vesselName>Adeline</vesselName>
    <unitNumber>XXXX</unitNumber>
    <move>
      <shipmentStatusCode>Exgated</shipmentStatusCode>
      <shipmentStatusDate>20140507</shipmentStatusDate>
      <shipmentStatusTime>22:51</shipmentStatusTime>
      <shipmentStatusLocation>PUR</shipmentStatusLocation>
      <shipmentStatusLocationTerminal>PTT</shipmentStatusLocationTerminal>
      <transportCompany>XXXX</transportCompany>
      <transportLicensePlate>XXXX</transportLicensePlate>
    </move>
  </shipment>
  <shipment>
    <clientReference>XXXX</clientReference>
    <shippingLineReference>34329940/4</shippingLineReference>
    <transportOrderReference>XXXX</transportOrderReference>
    <shippingLine>CLDN</shippingLine>
    <fileNumber>0.36.900</fileNumber>
    <routeCode>KGHZEE</routeCode>
    <vesselName>Non Arrival Zeebrugge</vesselName>
    <unitNumber>XXXX</unitNumber>
    <holdSet>
      <holdCode>AGENCY</holdCode>
      <holdComment>New Imdg/T1 booking</holdComment>
    </holdSet>
    <subholdSet>
      <majorHoldCode>A</majorHoldCode>
      <majorHoldName>Agency</majorHoldName>
      <minorHoldCode>IMDG</minorHoldCode>
      <minorHoldName>IMDG</minorHoldName>
      <holdComment>New Imdg/T1 booking</holdComment>
    </subholdSet>
    <move>
      <shipmentStatusCode>Checked in</shipmentStatusCode>
      <shipmentStatusDate>20140507</shipmentStatusDate>
      <shipmentStatusTime>23:25</shipmentStatusTime>
    </move>
  </shipment>
</cwebUnitMoves>

```



```
<shipmentStatusLocation>KGH</shipmentStatusLocation>  
<shipmentStatusLocationTerminal>XXXX</shipmentStatusLocationTerminal>  
<transportCompany>XXXX</transportCompany>  
<transportLicensePlate>XXXX</transportLicensePlate>  
</move>  
</shipment>  
</cwebUnitMoves>
```

5.10. cwebRouteInfo response example:

```
<?xml version="1.0" encoding="UTF-8"?>
<cwebRouteInfo route="ZEEPUR" version="1.0">
  <header>
    <senderID>CWEB</senderID>
    <receiverID>gcoelmon</receiverID>
    <replyMail>webmaster@cweb.lu</replyMail>
    <msgDate>20140508</msgDate>
    <msgTime>10:36:58</msgTime>
    <msgReference>20140508103658_01_00002781</msgReference>
  </header>
  <sailing>
    <file>201455230</file>
    <shipId>VALE</shipId>
    <shipName>VALENTINE</shipName>
    <sailingDate>20140508</sailingDate>
    <sailingTime>16:00</sailingTime>
    <arrivalDate>20140509</arrivalDate>
    <arrivalTime>00:01</arrivalTime>
    <operatedBy>COBFERAN</operatedBy>
    <rssPermit>TRUE</rssPermit>
    <etdPermit>TRUE</etdPermit>
  </sailing>
  <sailing>
    <file>201455232</file>
    <shipId>CELA</shipId>
    <shipName>CELANDINE</shipName>
    <sailingDate>20140508</sailingDate>
    <sailingTime>22:00</sailingTime>
    <arrivalDate>20140509</arrivalDate>
    <arrivalTime>06:00</arrivalTime>
    <operatedBy>COBFERAN</operatedBy>
    <rssPermit>TRUE</rssPermit>
    <etdPermit>TRUE</etdPermit>
  </sailing>
  ...
</cwebRouteInfo>
```

6. Fields & Descriptions

6.1. Booking Request field list

TAG	DESCRIPTION	TYPE/ LENGTH	MAND COND	REMARKS
cwebBookingRequest				
Header				
senderID	Identification of Sender	AN/8	M	
receiverID	Identification of Receiver	AN/8	M	Always 'CWEB'
replyMail	E-mail address to contact customer → replyEvent parameter inside this tag is possible. Values are: 'rejected', 'transferred', 'approved', 'invalid' or a comma-separated combination of those, or 'none' to send no mails. Default is 'none'.	AN/80	M	
msgDate	Date that message was generated (yyyyMMdd)	N/8	M	
msgTime	Time that message was generated (HH:MM:SS)	AN/8	M	
msgReference	Unique reference for this message	AN/26	M	
Create				
	Can be repeated unlimited. At least one occurrence of <create>, <modify> or <cancel> must be included		C	
+ bookingRequestBody	All tags of Booking Request Body (see 6.1.1)			
Modify				
	Can be repeated unlimited. At least one occurrence of <create>, <modify> or <cancel> must be included		C	
+ bookingRequestBody	All tags of Booking Request Body (see 6.1.1)			
Cancel				
	Can be repeated unlimited. At least one occurrence of <create>, <modify> or <cancel> must be included		C	
+ cancelBookingRequestBody	All tags of Cancel Booking Request Body (see 0)			

6.1.1.bookingRequestBody

TAG	DESCRIPTION	TYPE/ LENGTH	OPT MAN CON	REMARKS
bookingRequestBody				
clientReference (‘your reference’ in C.WEB)	Reference of the client, MUST BE UNIQUE for each shipment of a unit on a given sailing. In case of storage it should be unique for each storage-operation.	AN/14	M	When clientReference is returned in Booking Request Feedback, the field might be empty in case the Booking was manually made by a booking agent or initiated via C.WEB.
shippingLineReference (‘our reference’ in C.WEB)	Reference of the shipping line. Always unique. In case a booking was manually made by the shipping line and the clientReference was omitted, an update of this booking can be requested, using this reference to point to the correct booking. If the shipping line reference and the client reference are given, then the shipping line reference takes precedence allowing an update of the client reference.	AN/10	O	Will be supplied in Booking Request Feedback once the Booking Request is/was accepted by an agent.
transportOrderReference	Available for any further reference numbers or data you want to link to the booking request. It is returned as-is in the feedback and move messages.	AN/255	O	This reference is not displayed to our booking agents. There is no validation on the content of this field.
contractCode	Contract code	AN/8	M	See 8.2 Contract Code
routeCode	Consists of 3 characters for Port of Loading, followed by 3 characters for Port of Discharge. E.g. ZEEPUR, RTMDUB, ... → A Through shipment: can contain more than 2 ports. E.g. ZEEPURGOT → Special case for storage: Port of Discharge = ‘XXX’. E.g. ZEEXXX. In that case sailingDate and sailingTime cannot be specified	AN/18	M	See 8.12 Route Code
shipsOptionInd	Ship’s option, TRUE or FALSE. If TRUE, cargo may be shipped with any available sailing, but before the specified (ultimate) Sailing Date/Time.	BOOLEAN	O	FALSE if omitted
sailingDate	The desired sailing date. Please see the Sailing Schedule. (yyyyMMdd)	N/8	C	Not allowed in case of ‘Storage’ For units that return empty, and are allowed to be shipped when arrived on terminal

TAG	DESCRIPTION	TYPE/ LENGTH	OPT MAN CON	REMARKS
				(taking into account available space on board) use date 20491231 Mandatory in all other cases
sailingTime	The desired sailing time. Please see the Sailing Schedule. (HH:MM)	AN/5	C	Not allowed in case of 'Storage' For units that return empty, and are allowed to be shipped when arrived on terminal (taking into account available space on board) use time 00:00 Mandatory in all other cases
equipmentCode	Equipment Code, e.g. CONT, TRLR, ...)	AN/4	M	See 8.5 Equipment Code
unitNumber	Container number, trailer number,,	AN/13	C	Optional when booked, but should be specified before the unit arrives on the terminal
iluCode	identification of European intermodal loading units (BIC-Code).	AN/13	C	Mandatory for intermodal loading (transshipment Rail)
fullInd	Is the unit FULL (TRUE or FALSE)	BOOLEAN	M	
customsStatus	Refers to the status of goods as 'Union goods' or 'nonUnion goods'	AN/1	C	Mandatory and only applicable for Shipping line with RSS permit See 8.21 Customs status Code
ukBorderProcess	Refers to the UK border process: Westbound: T = "Temporary Storage Border Model (Destin8 Inventory Linked)" ("ukBorderProcess" Westbound no longer required 13/04/2023) Eastbound: E = "Exit Summary Declaration" T = "Export only - Temporary Storage Border Model (Destin8 Inventory Linked)"	AN/1	C	Mandatory for all Shipments from the UK (Eastbound) GVMS integration has been achieved as part of the "Temporary Storage" model for Westbound shipments

TAG	DESCRIPTION	TYPE/ LENGTH	OPT MAN CON	REMARKS
	1 = "Export + Transit: Export or Standalone EXS Declaration AND - Transit MRN" 2 = "Transit only: Transit MRN AND I request CLdN to raise EXS" 3 = "Office of Destination Port of Exit" 4 = "Export + Transit: Export or Standalone EXS Declaration AND Transit LRN" 5 = "Transit only: Transit LRN AND I request CLdN to raise EXS"			
gmrld	Goods Movement Reference	AN/36	C	For Westbound: EU – UK Transit to Final Destination and clearance via PreLod entries (GVMS); With valid GmrID unit is linked to GMVS. See 11.1.1 ConsignmentRequest Matrix
goodDescription	Description of (the contents of) the unit	AN/30	M	See 'Good Description guidelines'
releasee	You can share the batch code of the release. CLdN sends this code to Destin8, The purpose of this is that the pick up party gets the information faster.	AN/3	O	Not applicable for empties and returns Only for Westbound shipments where the port of discharge is working via Destin8 (KGH, PUR, DAG, TEE)
measurementInfo			M	
length	Length of the unit (in meters)	N/4.2	M	
tareWeight	Tare weight of the unit (in kilos)	N/6	C	Mandatory in case unitNumber not empty
cargoWeight	Weight of the cargo (in kilos)	N/6	C	Mandatory in case unit not empty Weight check with consignment items: <cargoWeight> of the unit cannot be less than the sum <grossWeight> of all consignment items on the unit.
vgm	Verified Gross Mass	N/6	C	Mandatory for packed Containers on specific routes Required routes, see section 8.12 Route code
vgmResponsible	Signature of Responsible (!Full NAME uppercase !)	AN/50	C	Mandatory in case of vgm
width	Width (in meters). Only provide this in case of non-standard width	N/4.2	O	Only provide in case of non-standard width > 2,55

TAG	DESCRIPTION	TYPE/ LENGTH	OPT MAN CON	REMARKS
height	Height (in meters). Only provide this in case of non-standard height	N/4.2	O	Only provide in case of non-standard height > 5,00
urgencyInd	Urgent - TRUE or FALSE	BOOLEAN	O	Default=FALSE, if omitted
wasteInd	TRUE or FALSE	BOOLEAN	O	FALSE if omitted
animalByProductInd	TRUE or FALSE	BOOLEAN	O	FALSE if omitted
lateArrivalInd	Unit will arrive on quay after closing time - TRUE or FALSE	BOOLEAN	O	FALSE if omitted
deliveryDate	Date by which the cargo must reach its final destination (POD) (yyyyMMdd)	N/8	O	
noStackAtArrivalInd	Indicator that unit should NOT be placed in stack when reaching POD (liftunits only) - TRUE or FALSE	BOOLEAN	O	FALSE if omitted
pickupLicensePlate	License plate that will pick up the unit.	AN/12	O	Attention: When provided, only the truck with this license plate can collect the unit. No one else !
hazardousInfo	Use this block to specify the cargo is hazardous. If the UN nrs are not known yet, you can leave the underlying tags out.		O	Can be repeated 10 times
unNumber	Four-digit numbers that identify hazardous substances	N/4	O	
classNum	1 → 9	N/1	O	1 digit, 1 to 9
packingGroup	“ “,1,2,3	AN/1	O	Blank or 1,2,3 (not roman III)
limitedQuantInd	Indicator that hazardous substance will be shipped in limited quantities - TRUE or FALSE	BOOLEAN	O	
temperatureInfo	Only for Equipment Code RFTR, RFCT, TKCT, CPCT, DECT, CHAS ! and SELFO		O	
temperature	Temperature in degrees Celsius	N/4	M	-999 up to 999
mintemperature	Temperature in degrees Celsius; must be less than <temperature>	N/4	O	If Min. temp is entered, then also Max. temp is required (and vice versa).

TAG	DESCRIPTION	TYPE/ LENGTH	OPT MAN CON	REMARKS
maxtemperature	Temperature in degrees Celsius; must be more than <temperature>	N/4	O	If Max. temp is entered, then also Min. temp is required (and vice versa).
instructions	For every compartment of a reefer unit an instruction must be provided for the people on terminal. In case of 2 control panels, describe the panel relating to the first cell, e.g. "left", "right", "front", "rear"...		O	
temperatureCell2	For reefer units with 2 compartments that need to be temperature controlled.	N/4	O	
mintemperatureCell2	Temperature in degrees Celsius; must be less than <temperature> Same as <temperatureCell2>, if not mentioned.	N/4	O	If Min. temp is entered, then also Max. temp is required (and vice versa).
maxtemperatureCell2	Temperature in degrees Celsius; must be more than <temperature> Same as <temperatureCell2>, if not mentioned.	N/4	O	If Max. temp is entered, then also Min. temp is required (and vice versa).
instructionsCell2	For every compartment of a reefer unit an instruction must be provided for the people on terminal. In case of 2 control panels, describe the panel relating to the first cell, e.g. "left", "right", "front", "rear"...	AN/30	O	
twoEngines	If the reefer unit has two engines, this must be indicated here: True or False. I.e. 2 plug connections required or not.	Boolean	O	
plugAtPortOfLoadingCode	Should unit be plugged in at port of loading or only monitored? Possible values: 'Y'es, 'M'onitor, 'N'one.	AN/1	M	See 8.10 Plug Code
plugOnVesselCode	Should unit be plugged in on board of vessel or only monitored? Possible values: 'Y'es, 'M'onitor, 'N'one.	AN/1	M	See 8.10 Plug Code
plugAtPortOfDischargeCode	Should unit be plugged in at port of discharge or only monitored? Possible values: 'Y'es, 'M'onitor, 'N'one.	AN/1	M	See 8.10 Plug Code
sealInfo			O	Can be repeated 2 times
sealTypeCode	Type of the seal	AN/2 M		See 8.13 Seal Code
sealNumber	Number of the seal	AN/18	M	

TAG	DESCRIPTION	TYPE/ LENGTH	OPT MAN CON	REMARKS
CustomsInfo	Customs Info section is only for regular lines and therefore not for sailings from third countries. For from/to destinations outside the community see procedures in section "11 ConsignmentInfo"		O	Can be repeated 5 times
DocumentType	Type of document (T1, T2, ...)	AN/4	M	
DocumentNumber	Number of the document	AN/10	M	'111111' if documentNumber not known yet
ValidToLocation	Location to/till where document is valid	AN/30	O	
ClearanceRequired	Indicate if customs clearance is required for one specific unit. Only for export from UK units. (TRUE or FALSE)	BOOLEAN	O	This option will be removed after BREXIT
remarks	Specify any further special requirements related to the actual shipment.	AN/52	O	Displayed to terminal personnel or vessel crew (manifest).
adminRemarks	Specify any administrative remarks for the shipping line's agent.	AN/255	O	Not displayed to terminal personnel or vessel.
partyInfo	Can be repeated 3 times Mandatory for 'CONSIGNEE', optional for 'NOTIFY' → in this order!!		M	
partyCode	Identifier of specified party	AN/10	M	See 8.9 Party Code
name	Name	AN/24	C	Mandatory for 'CONSIGNEE'
address	Address	AN/24	O	
address2	Address (continued)	AN/24	O	
countryCode	Country	AN/2	O	See 8.4 Country Code
city	City	AN/21	O	
vat	VAT or Fiscal ID	AN/28	C	Mandatory for 'CONSIGNEE'
preOnCarriageInfo	Only if oncarriage = not by road		O	

TAG	DESCRIPTION	TYPE/ LENGTH	OPT MAN CON	REMARKS
preCarriageTransportModeCode	Mode of precarriage-transport	AN/2	C	See 8.16 Pre-carriage Transport Mode Code Only if precarriage = not by road
estimatedDateOfArrival	Date of arrival at Port of Loading (yyyyMMdd)	N/8	O	
onCarriageTransportModeCode	e.g. 'RL' rail, 'BG' barge and 'VS' vessel	AN/2	C	See 8.17 On-carriage Transport Mode Code Only if oncarriage = not by road
estimatedDateOfDeparture	Date of departure at Port of Discharge (yyyyMMdd)	N/8	O	
finalDestination	Country	AN/2	O	See 8.4 Country Code Mandatory when POL = SDR or LEI
selfDriveInfo			C	
transportCompany	Transport company	AN/17	O	
transportLicensePlate	License Plate of the Cab	AN/10	O	
transportCountryCode	Nationality of the truck (license plate)	AN/2	O	See 8.4 Country Code
driverPassengerInfo			O	Can be repeated 5 times
lastName		AN/36		
firstName		AN/36	M	In case you have two passengers and the Driver names are not known yet please send: <driverPassengerInfo> <firstName>TBA</firstName> </driverPassengerInfo> <driverPassengerInfo> <firstName>TBA</firstName> </driverPassengerInfo>
passportNumber		AN/16	M	
nationalityCode		AN/2	M	See 8.4 Country Code
placeOfBirth		AN/36	M	
dateOfBirth	(yyyyMMdd)	N/8	M	
gender		A/1	M	"M" for Male, "F" for female

TAG	DESCRIPTION	TYPE/ LENGTH	OPT MAN CON	REMARKS
passportExpiryDate	(yyyyMMdd)	N/8	M	
passportCountryOfIssue	Passport country of issue	AN/2	M	See 8.4 Country Code

6.1.2.cancelBookingRequestBody

TAB	DESCRIPTION	TYPE/ LENGTH	MAN CON	REMARKS
cancelBookingRequestBody				
clientReference (‘your reference’ in C.WEB)	Reference of the client, MUST BE UNIQUE for each shipment of a unit on a given sailing. In case of storage it should be unique for each storage-operation.	AN/14	M	When clientReference is returned in Booking Request Feedback, the field might be empty in case the booking was manually made by a booking agent or initiated via C.WEB.
shippingLineReference (‘our reference’ in C.WEB)	Reference of the shippingline. Always unique. In case a booking was manually made by the shipping line and the clientReference was omitted, an update of this booking can be requested, using this reference to point to the correct booking.	AN/10	O	Will be supplied in Booking Request Feedback once the Booking Request is/was accepted by an agent.
transportOrderReference		AN/255	O	Only returned if specified in a previous create/modify.

6.2. Booking Request Receipt field list

TAG	DESCRIPTION	TYPE/ LENGTH	MAN CON	REMARKS
cwebBookingRequestReceipt version 1.0				
header				
senderID	Identification of Sender	AN/8	M	Always 'CWEB'
receiverID	Identification of Receiver	AN/8	M	
replyMail	Our e-mail address			Always 'webmaster@cweb.lu'
msgDate	Date that message was generated (yyyyMMdd)	N/8	M	
msgTime	Time that message was generated (HH:MM:SS)	AN/8	M	
msgReference	Unique reference for this message	AN/26	M	
receipt				
For each <create>, <modify> and <cancel> block in your request, a <receipt> response is sent.				
clientReference (‘your reference’ in C.WEB)	Reference of the client, MUST BE UNIQUE for each shipment of a unit on a given sailing. In case of storage it should be unique for each storage-operation.	AN/14	M	
shippingLineReference	Reference of the shipping line. Always unique. In case a booking was manually made by the shipping line and the clientReference was omitted, an update of booking can be requested, using this reference to point to the correct booking.		O	
bookingRequestID	Unique Booking Request Id given by C.WEB for each (unique) request if Received via C.WEB online or C.WEB EDI	N/20	C	Will be supplied when the request is/was processed without errors
transportOrderReference	Available for any further reference numbers or data you want to link to the booking request.	AN/255	O	Only returned if specified in a previous create/modify.
confirmationInfo			O	EITHER confirmationInfo is sent OR errorInfo – never both
confirmationCode	Code of confirmation (‘OK’)	AN/2	M	See 8.3 Confirmation Code
confirmationDescription	Description of confirmation	X/30	M	

errorInfo		Can be repeated 10 times		O	EITHER confirmationInfo is sent OR errorInfo – never t
errorCode	Code of error		N/4	M	See 8.6 Error Code
errorDescription	Description of error		X/30	M	

6.3.Booking Request Feedback field list

6.3.1. bookingRequestFeedback

TAG	DESCRIPTION	TYPE/ LENGTH	MAN CON	REMARKS
cwebBookingRequestFeedback version = 1.0				
header				
senderID	Identification of Sender	AN/8	M	Always 'CWEB'
receiverID	Identification of Receiver	AN/8	M	
replyMail	Our e-mail address			Always 'webmaster@cweb.lu'
msgDate	Date that message was generated (yyyyMMdd)	N/8	M	
msgTime	Time that message was generated (HH:MM:SS)	AN/8	M	
msgReference	Unique reference for this message	AN/26	M	
created				
For each individual booking that has been created since the last time you received feedback, a <created> response is sent.			O	
clientReference ('your reference' in C.WEB)	Reference of the client, MUST BE UNIQUE for each shipment of a unit on a given sailing. In case of storage it should be unique for each storage-operation.	AN/14	O	When clientReference is returned in Booking Request Feedback, the field might be empty in case the booking was manually made by a booking agent or initiated via C.WEB.
shippingLineReference ('our reference' in C.WEB)	Reference of the shipping line. Always unique. In case a booking was manually made by the shipping line and the clientReference was omitted, an update of this booking can be requested, using this reference to point to the correct booking	AN/10	O	Will be supplied in Booking Request Feedback once the Booking Request is/was accepted by an agent.
bookingRequestID	Unique Booking Request Id given by C.WEB for each (unique) request if received via C.WEB online or C.WEB EDI	N/20	M	
transportOrderReference		AN/255	O	Only returned if specified in a previous create/modify.
+currentBookingInfo	All tags of Current Booking Info (see 6.3.2)			
modified				
For each individual booking that has been changed since the last time you received feedback, a <modified> response is sent.			O	

clientReference reference' in C.WEB)	Reference of the client, MUST BE UNIQUE for each shipment of a unit on a given sailing. In case of storage it should be unique for each storage-operation.	AN/14	O	When clientReference is returned in Booking Request Feedback, the field might be empty in case the booking was manually made by a booking agent or initiated via C.WEB.
shippingLineReference (our reference' in C.WEB)	Reference of the shipping line. Always unique. In case a booking was manually made by the shipping line and the clientReference was omitted, an update of the booking can be requested, using this reference to point to the correct booking	AN/10	O	Will be supplied in Booking Request Feedback once the Booking Request is/was accepted by an agent.
bookingRequestID	Unique Booking Request Id given by C.WEB for each (unique) request if received via C.V online or C.WEB EDI	N/20	M	
transportOrderReference		AN/255	O	Only returned if specified in a previous create/modify.
+currentBookingInfo	All tags of Current Booking Info (see 6.3.2)			
cancelled	For each individual booking that has been cancelled since the last time you received feedback, a <cancelled> response is sent.		O	
clientReference ('your reference' in C.WEB)	Reference of the client, MUST BE UNIQUE for each shipment of a unit on a given sailing. In case of storage it should be unique for each storage-operation.	AN/14	M	When clientReference is returned in Booking Request Feedback, the field might be empty in case the booking was manually made by a booking agent or initiated via C.WEB
shippingLineReference (our reference' in C.WEB)	Reference of the shipping line. Always unique. In case a booking was manually made by the shipping line and the clientReference was omitted, an update of the booking can be requested, using this reference to point to the correct booking	AN/10	O	Will be supplied in Booking Request Feedback once the Booking Request is/was accepted by an agent
bookingRequestID	Unique Booking Request Id given by C.WEB for each (unique) request if received via C.V online or C.WEB EDI	N/20	M	
transportOrderReference	Available for any further reference numbers or data you want to link to the booking request.	AN/255	O	Only returned if specified in a previous create/modify.
requestRejected	For each booking request that is not accepted by the booking agent, a <requestrejected> response is sent.		O	

clientReference ('your reference' in C.WEB)	Reference of the client, MUST BE UNIQUE for each shipment of a unit on a given sailing. In case of storage it should be unique for each storage-operation.	AN/14	M	When clientReference is returned in Booking Request Feedback, the field might be empty in case the booking was manually made by a booking agent or initiated via C.WEB
shippingLineReference ('our reference' in C.WEB)	Reference of the shipping line. Always unique. In case a booking was manually made by the shipping line and the clientReference was omitted, an update of the booking can be requested, using this reference to point to the correct booking	AN/10	O	Will be supplied in Booking Request Feedback once the Booking Request is/was accepted by an agent
bookingRequestID	Unique Booking Request Id given by C.WEB for each (unique) request if received via C.V online or C.WEB EDI	N/20	M	
transportOrderReference	Available for any further reference numbers or data you want to link to the booking request.	AN/255	O	Only returned if specified in a previous create/modify.
currentBookingInfo	All tags of Current Booking Info (see 6.3.2)			
errorInfo	Can be repeated 10 times		O	
errorCode	Code of error	N/4	M	See 8.6 Error Code
errorDescription	Description of error	X/30	M	

6.3.2.Current Booking Info

TAG	DESCRIPTION	TYPE/ LENGTH	MAN CON	REMARKS
currentBookingInfo				
+bookingRequestBody	All fields of Booking Request Body possibly modified by shipping agent (see 5.1.1)			
shippingLine	Name of the shipping line where the booking is/was accepted for	AN/8	C	
fileNumber	File number given by shipping line for each sailing (is later mentioned on invoices)	AN/8	C	
vesselName	Vessel name	AN/26	C	
pinCode	Pin code given by shipping line (needed for release of cargo)	N/4	C	
shipmentStatusCode	Status of shipment when message was created.	AN/10	C	See 8.14 Shipment Status Code
standbyInd	Indicates that shipment is on stand-by for given sailing - TRUE or FALSE	BOOLEAN	C	
otherSailingInd	Indicates that sailing date/time requested by client has been modified by booking agent - TRUE or FALSE	BOOLEAN	C	
rateCode	Indicates type of rate	AN/12	C	See 8.11 Rate Code
bookingAgentResponseCode	Reason for stdby, transfer to other sailing, rejection of request	N/4	O	See 8.6 Error Code
bookingAgentResponseComment	Comment entered by booking agent on top of coded response	AN/256	O	
autoApproval	Indicates the request is automatically approved by the system TRUE	BOOLEAN	O	(tag only given when TRUE)
holdSet	Can be repeated		O	
holdCode	Type of hold	AN/14	O	See 8.7 Hold Code
holdComment	Optional remarks by agent	AN/36	O	
holdReleased	Can be repeated		O	
holdCode	Type of hold	AN/14	O	See 8.7 Hold Code
holdComment	Optional remarks by agent	AN/36	O	

subholdSet		Can be repeated		O	
	majorHoldCode	Type of hold	AN/1	O	See 8.7 Hold Code
	majorHoldName	Type of hold	AN/20	O	See 8.7 Hold Code
	minorHoldCode	Type of hold	AN/10	O	See 8.7 Hold Code
	minorHoldName	Type of hold	AN/20	O	See 8.7 Hold Code
	holdComment	Optional remarks by agent	AN/36	O	
subholdReleased		Can be repeated		O	
	majorHoldCode	Type of hold	AN/1	O	See 8.7 Hold Code
	majorHoldName	Type of hold	AN/20	O	See 8.7 Hold Code
	minorHoldCode	Type of hold	AN/10	O	See 8.7 Hold Code
	minorHoldName	Type of hold	AN/20	O	See 8.7 Hold Code
	holdComment	Optional remarks by agent	AN/36	O	

6.4. Unit Moves field list

TAG	DESCRIPTION	TYPE/ LENGTH	MAN CON.	REMARKS
cwebUnitMoves version = 1.0				
header				
senderID	Identification of Sender	AN/8	M	Always 'CWEB'
receiverID	Identification of Receiver	AN/8	M	
replyMail	Our e-mail address			Always 'webmaster@cweb.lu'
msgDate	Date that message was generated (yyyyMMdd)	N/8	M	
msgTime	Time that message was generated (HH:MM:SS)	AN/8	M	
msgReference	Unique reference for this message	AN/26	M	
shipment				
clientReference (your reference in C.WEB)	Reference of the client, MUST BE UNIQUE for each shipment of a unit on a given sailing. In case of storage it should be unique for each storage-operation.	AN/14	M	
shippingLineReference (our reference in C.WEB)	Reference of the shipping line. Always unique.	AN/10	M	
transportOrderReference	Available for any further reference numbers or data you want to link to the booking request.	AN/255	O	Only returned if specified in a previous create/modify.
shippingLine	Name of the shipping line where the booking is/was accepted for	AN/8	M	
fileNumber	File number given by shipping line for each sailing	AN/8	M	(is later mentioned on invoices)
routeCode	Consists of 3 characters for Port of Loading, followed by 3 characters for Port of Discharge. E.g. ZEEPUR, RTMDUB, ... → Special case for storage: Port of Discharge = 'XXX'. E.g. ZEEXXX → Through Shipment: Only first and last port are shown.	AN/6	M	See 8.12 Route Code
vesselName	Vessel name	AN/26	M	
unitNumber	Container number, trailer number,,,	AN/13	M	
bookedViaCweb	(TRUE or FALSE) to enable a check on incoming invoices from the Line.	BOOLEAN	C	Only returned with shipmentStatusCode Sailed & Arrived

pluggedOnVessel	(TRUE or FALSE) to enable a check on incoming invoices from the Line.	BOOLEAN	C	Only returned with shipmentStatusCode Sailed & Arrived
imdgPlacardsAdded	Number of IMDG placards handed over to driver. to enable a check on incoming invoices from the Line.	N	C	Only returned with shipmentStatusCode Sailed & Arrived and >0
holdSet	Can be repeated		O	
holdCode	Type of hold	AN/14	O	See 8.7 Hold Code
holdComment	Optional remarks by agent	AN/36	O	
subholdSet	Can be repeated		O	
majorHoldCode	Type of hold	AN/1	O	See 8.7 Hold Code
majorHoldName	Type of hold	AN/20	O	
minorHoldCode	Type of hold	AN/10	O	
minorHoldName	Type of hold	AN/20	O	
holdComment	Optional remarks by agent	AN/36	O	
move	Can be repeated 6 times		O	
shipmentStatusCode	Status of shipment, related to move	AN/10	M	See 8.14 Shipment Status Code
shipmentStatusDate	Date when status was reached (yyyyMMdd)	N/8	M	
shipmentStatusTime	Time when status was reached (HH:MM)	AN/5	M	
shipmentStatusLocation	Location where the status was reached. (e.g ZEE for Zeebrugge)	AN/3		
shipmentStatusLocationTerminal	Terminal where the status was reached. (e.g. BRIT for Brittanniadok)	AN/4		
estArrivalDate	Date when the vessel is estimated to arrive in the port of discharge	(yyyyMMdd)	C	Only in case of 'LOADED' and 'SAILED'
estArrivalTime	Time when the vessel is estimated to arrive in the port of discharge	(HH:MM)	C	Only in case of 'LOADED' and 'SAILED'
transportCompany	Transport company	AN/18	C	Only in case of 'CHECKEDIN'/EXGATED'
transportLicensePlate	License Plate of the Cab	AN/12	C	Only in case of 'CHECKEDIN'/EXGATED'

6.5. Route Info field list

TAG	DESCRIPTION	TYPE/ LENGTH	MAN CON.	REMARKS
cwebRouteInfo route="POLPOD" version = 1.0				
header				
senderID	Identification of Sender	AN/8	M	Always 'CWEB'
receiverID	Identification of Receiver	AN/8	M	
replyMail	Our e-mail address			Always 'webmaster@cweb.lu'
msgDate	Date that message was generated (yyyyMMdd)	N/8	M	
msgTime	Time that message was generated (HH:MM:SS)	AN/8	M	
msgReference	Unique reference for this message	AN/26	M	
sailing				
file	The internal file number of the sailing	AN/9	M	yyyrrnnn
shipId	The vessel's short name	AN/4	M	
shipName	The vessel's full name	AN/20	M	
sailingDate	The date of departure in the port of loading	yyyymmdd	M	
sailingTime	The time of departure in the port of loading	HH:MM	M	
arrivalDate	The date of arrival in the port of discharge	yyyymmdd	M	
arrivalTime	The time of arrival in the port of discharge	HH:MM	M	
operatedBy	The company that operates the cargo (shipping line's short name)	AN/20	M	
rssPermit	(TRUE or FALSE) Shipping line has Regular Shipping Service Permit	BOOLEAN	M	
etdPermit	(TRUE or FALSE) Shipping line has ETD Permit	BOOLEAN	M	

7. EDI Test Cases

Test	Incoming EDI message / variant	HTTP Response Code	XML Response	Agent Action	Feedback XML Response	Remarks / Corrective actions
1	Any message, EDI webserver down	(conn. refused)	N/A	N/A	N/A	Retry later; contact webmaster
2	Any message, unexpected problem	HTTP 500	N/A	N/A	N/A	Retry later; contact webmaster
3	Any message, unexpected problem	HTTP 200	internalError	N/A	N/A	Retry later; contact webmaster
4	Any message with wrong credentials	HTTP 401/403	N/A	N/A	N/A	Double check; contact webmaster
5	Invalid message (e.g. XML syntax error, unknown top-level tag)	HTTP 200	messageRejected	N/A	N/A	Whole message rejected; See messageRejected / errorDescription; Please fix and resend
6	cwebBookingRequest / create	HTTP 200	cwebBookingRequestReceipt w. bookingRequestId	Approve	created	Normal case - valid request, approved by agent.
7	cwebBookingRequest / create	HTTP 200	cwebBookingRequestReceipt w. bookingRequestId	Reject	requestRejected	Valid request, rejected by agent (e.g. boat is full); see cwebBookingRequestFeedback / requestRejected / errorInfo / errorDescription
8	create with IMDG	HTTP 200	cwebBookingRequestReceipt w. bookingRequestId	Approve	created	Same as normal case; requires valid DGN before allowed on terminal. Send DGN to attachments@cweb.lu, subject = <i>'contract;clientref'</i>
9	create with sailing time off by less than +/- 2 hours	HTTP 200	cwebBookingRequestReceipt w. bookingRequestId	Approve	created / otherSailingInd	Sailing time adjusted automatically to nearest sailing.
10	create with sailing time off by more than +/- 2 hours	HTTP 200	cwebBookingRequestReceipt w. bookingRequestId	Transfer	created / otherSailingInd	Sailing time adjusted by agent (will likely contact customer before deciding).
11	create with logical errors (e.g. duplicate unit, wrong data type)	HTTP 200	cwebBookingRequestReceipt w. errorInfo	N/A	N/A	Immediately rejected; See cwebBookingRequestReceipt / receipt / errorInfo / errorDescription; fix and resend
12	cwebBookingRequest / modify	HTTP 200	cwebBookingRequestReceipt	Approve	modified	Normal case - valid modification request, approved by agent
13	cwebBookingRequest / modify	HTTP 200	cwebBookingRequestReceipt	Reject	requestRejected / currentBookingInfo	Valid modification request, rejected by agent (e.g. already on board); see cwebBookingRequestFeedback / requestRejected / errorInfo / errorDescription
14	cwebBookingRequest / modify of nonexistent booking	HTTP 200	cwebBookingRequestReceipt w. errorInfo	N/A	N/A	Immediately rejected; See cwebBookingRequestReceipt / receipt / errorInfo / errorDescription; Please fix and resend
15	N/A	N/A	N/A	Manual modification	modified	Agent modifies booking on the back-end system. You receive the new status of the booking next time you call cwebBookingRequestFeedback (see currentBookingInfo)

16	cwebBookingRequest / cancel	HTTP 200	cwebBookingRequestReceipt	Approve	cancelled	Booking is deleted on the backend server. Request history is kept.
17	cwebBookingRequest / cancel	HTTP 200	cwebBookingRequestReceipt	Reject	requestRejected / currentBookingInfo	Valid cancellation request, rejected by agent (e.g. already on board); Booking remains as-is (see currentBookingInfo)
18	cwebBookingRequest / cancel of nonexistent booking	HTTP 200	cwebBookingRequestReceipt w. errorInfo	N/A	N/A	Immediately rejected; See cwebBookingRequestReceipt / receipt / errorInfo / errorDescription; Please fix and resend
19	N/A	N/A	N/A	Manual cancellation	cancelled	Agent cancels booking on the back-end system. You receive notification next time you call cwebBookingRequestFeedback.
20	cwebBookingRequestFeedback	HTTP 200	cwebBookingRequestFeedback	N/A	N/A	You receive notification of all agent actions since your last call to cwebBookingRequestFeedback, and all changes to cargo holds.
21	cwebUnitMoves	HTTP 200	cwebUnitMoves	N/A	N/A	You receive new moves since your last call to cwebUnitMoves, and all current holds.
22	Final test: run in shadow-production mode for a while	N/A	N/A	N/A	N/A	For one or two voyages: send all production booking requests for these voyages to the test system

8. Used Codes

8.1. Booking Agent Response Code

CODE
See 8.6 Error Codes.

8.2. Contract Code

CODE
A contract is a commercial agreement. Clients can have different contracts. For each contract a Contract Code exists. Codes will be communicated via your account manager or our EDI Help Desk Team.

8.3. Confirmation Code

CODE	
OK	The confirmationCode is always 'OK'.
If the message is not OK, there is no confirmationInfo block, but an errorInfo block. See 8.6 Error Codes.	

8.4. Country Code

CODE
United Nations country codes are used

8.5. Equipment Code

CODE	DESCRIPTION
BEAM	Beams
BNTR	Bulktrailer not sheeted
BOAT	Boat on cradle
BSTR	Bulktrailer sheeted
BUCT	BreakBulk Container
CAMP	Camper
CAR1	Car
CARA	Caravan
CHAS	Chassis

CONT	Container
COTR	Container on own chassis
CPCT	Carpet Container
CSCT	Curtain Side Cont
DECT	Diesel Electrical Reefer
EXCA	Excavator
FLAT	Flat (lift)
FLTR	Flatbed Trailer
GECA	General cargo
HCCT	High Cube Container
OTCT	Open Top Container
RFCT	Reefer Container
RFTR	Reefer Trailer
SELF	Self Drive Unit
SWAP	Swap Body (lift)
TKCT	Tank Container
TKTR	Tank Trailer/Tank on chassis
TRAC	Tractor (Unp)
TRLR	Trailer
VAN2	Van
HCTR	High Cube Trailer
PJCA	Project Cargo

8.6. Error Code

CODE	DESCRIPTION
General	
0XXX	Internal error – bug in our software
1XXX	'Physical' problem: e.g. syntax error in XML, unknown command, wrong HTTP method,...
In Create / Modify / Cancel message	
2XXX	'Logical' problem in the request: e.g. mandatory field empty, use of unknown tags,...
In Feedback message – reasons of rejection	
31XX	Dimensions exceed allowed maximum

32XX	Capacity exceeded (e.g. ship full, insufficient plug points,...)
33XX	Problem with dangerous goods
34XX	Too late to accept this request (e.g. ship closed, unit already loaded,...)
35XX	Double booking
39XX	Other

8.7. Hold Code

Major HoldCode	Major HoldName	Minor HoldCode	Minor HoldName	Description
A	Agency	IMDG	IMDG	Set when IMDG booking is made
A	Agency	VGM	VGM	Set when verified gross mass is required (for certain shipping lines)
A	Agency	WASTE	Waste	Set when waste is booked
A	Agency	ANPROD	Animal Products	Set when animal products are booked
A	Agency	AGENCY	Ad hoc agency	Set by booking agent for various reasons
A	Agency	NMLEG	New multileg	Set as long as not all legs of a multileg are validated
A	Agency	NCTS	NCTS	Consignments document needs to be updated by the freight office following permission to progress granted and Transit MRN documentation received from UK Border Force
A	Agency	AMBOQ	Move back on quay	Set when a unit is moved back on quay after being loaded
A	Agency	DNM	Do not mount	Unit should not be mount on cassette because it will not be shipped (customer orders not to ship)
A	Agency	MEAW	Measured weight	Measured weight > 7.5 ton & Empty unit during (measured weight is determined when reposition lift unit first time)
A	Agency	CHCON	Change consignments	Set when consignments needs to be changed in C.WEB for unit already on terminal
T	Terminal	CYCL	Cyclamen	Set in case that the cyclamen alarm goes off. Prevents the unit from leaving by the gate (only for Killingholme terminal)
T	Terminal	OVERL	Overlanded	Set when a unit is overlanded
T	Terminal	TMBOQ	Move Back on Quay	Set when a unit is moved back on quay after being loaded
T	Terminal	TERM	Ad hoc terminal hold	Set by the Stevedore for various reasons

I	IMDG	SEGR	Manual IMDG Segregation Check	The cargo contains a specific UN number. The shipping line needs to perform checks to decide whether shipment is allowed or not
F	Finance	PREP	Prepaid	Set for customers that need to pay upfront
C	Customs	GVMS	Gvms	Set as long as GMR-id is not checked in GVMS system
C	Customs	EXIT	Exit	Prevents units to be picked up due to hanging custom procedures
C	Customs	ENTRY	Entry	Prevents units to be loaded on the vessel due to hanging custom procedures
C	Customs	BW	Bonded warehouse	Set when unit is moved to a bonded warehouse
C	Customs	MC	Missing consignments	Set in case of missing consignment information
C	Customs	CI	Consignments incomplete	Consignment completion not yet confirmed in C.WEB
C	Customs	CGATIN	Customs gate in	Consignment info is missing. Unit is not allowed on terminal
C	Customs	ENS	ENS	Entry summary declaration is not confirmed by customs
C	Customs	IEMPTY	Investigate Empty Unit	Set in case customs requests to inspect the empty unit
C	Customs	VETCHK	Veterinary check	Set when Dutch Health Authority wants to perform a veterinary check
C	Customs	DOCCHK	Document check	Set when CLdN customs team needs to sort out a document issue
C	Customs	CSTMS	Ad hoc customs hold	Set when requested by customs for various reasons
C	Customs	SSPD	Shortshipped	Set when a unit is manifested but not physically shipped
B	BorderAuthority	CSTMSL	Customs local	Set manually by local customs authorities
B	BorderAuthority	VESSEL	Vessel	Will only be used in exceptional cases to set all bookings for one sailing on hold
B	BorderAuthority	SCAN	Scan	Set when unit is selected by border authority Zeebruges to be scanned

8.8. Nationality Code

CODE
United Nations country codes are used

8.9. Party Code

CODE	DESCRIPTION
SHIPPER	The party that is responsible for the shipment of the cargo (only required for dgd)
CONSIGNEE	Is the receiver of the unit (trailer, container...) not the goods. It is the company who can claim in case of damages.
NOTIFY	The party that needs to be informed about the shipment of the cargo

Package codes

CODE	DESCRIPTION
AE	Aerosol
AM	Ampoule, non-protected
AP	Ampoule, protected
AT	Atomizer
BA	Barrel
BB	Bobbin
BC	Bottle crate, bottle rack
BD	Board
BE	Bundle
BF	Balloon, non-protected
BG	Bag
BH	Bunch
BI	Bin
BJ	Bucket
BK	Basket
BL	Bale, compressed
BN	Bale, non-compressed
BO	Bottle, non-protected, cylindrical
BP	Balloon, protected
BQ	Bottle, protected cylindrical
BR	Bar
BS	Bottle, non-protected, bulbous

BT	Bolt
BU	Butt
BV	Bottle, protected bulbous
BX	Box
BY	Board, in bundle/bunch/truss
BZ	Bars, in bundle/bunch/truss
CA	Can, rectangular
CB	Beer crate
CC	Churn
CE	Creel
CF	Coffer
CG	Cage
CH	Chest
CI	Canister
CJ	Coffin
CK	Cask
CL	Coil
CO	Carboy, non-protected
CP	Carboy, protected
CR	Crate
CS	Case
CT	Carton
CU	Cup
CV	Cover
CX	Can, cylindrical
CY	Cylinder
CZ	Canvas
DJ	Demijohn, non-protected
DP	Demijohn, protected
DR	Drum
EN	Envelope
FC	Fruit crate
FD	Framed crate
FI	Firkin
FL	Flask
FO	Footlocker
FP	Film pack
FR	Frame
GB	Gas bottle
GI	Girder

GZ	Girders, in bundle/bunch/truss
HG	Hogshead
HR	Hamper
IN	Ingot
IZ	Ingots, in bundle/bunch/truss
JC	Jerri can, rectangular
JG	Jug
JR	Jar
JT	Jute bag
JY	Jerri can, cylindrical
KG	Keg
LG	Log
LZ	Logs, in bundle/bunch/truss
MB	Multiply bag
MC	Milk crate
MS	Multiwall sack
MT	Mat
MX	Match box
NE	Unpacked or unpackaged
NS	Nest
NT	Net
PA	Packet
PC	Parcel
PG	Plate
PH	Pitcher
PI	Pipe
PK	Package
PL	Pail
PN	Plank
PO	Pouch
PT	Pot
PU	Tray/Tray pack
PY	Plates, in bundle/bunch/truss
PZ	Pipes/planks, in bundle/bunch/truss
RD	Rod
RG	Ring
RL	Reel
RO	Roll
RT	Red net
RZ	Rods, in bundle/bunch/truss

SA	Sack
SC	Shallow crate
SD	Spindle
SE	Sea-chest
SH	Sachet
SI	SKID
SK	Skeleton case
SL	Slip sheet
SM	Sheet metal
ST	Sheet
SU	Suitcase
SW	Shrink wrapped
SZ	Sheets, in bundle/bunch/truss
TB	Tub
TC	Tea-chest
TD	Collapsible tube/Tube, collapsible
TK	Tank, rectangular
TN	Tin
TO	Tun
TR	Trunk
TS	Truss
TU	Tube
TY	Tank, cylindrical
TZ	Tubes, in bundle/bunch/truss
VA	Vat
VG	Bulk, gas (at 1031 mbar and 15C)
VI	Vial
VL	Bulk, liquid
VO	Bulk, solid, large particles
VP	Vacuum-packed
VQ	Bulk, liq. gas (at normal temp./press)
VR	Bulk, solid, granular particles
VY	Bulk, solid, fine particles
WA	Intermediate bulk container
WB	Wicker bottle

8.10. Plug Code

CODE	DESCRIPTION
Y	Plug and monitor

M	Monitor only (e.g. with diesel engine)
N	Do not plug, do not monitor

8.11. Rate Code

CODE	DESCRIPTION
STD	Standard rate is applied
EXC	Exceptional rate as agreed with client is applied

8.12. Route Code

Route modification restriction:

It is again possible to change the POL (Port Of Loading) on an existing booking.

This only applies from an RSS line (Regular Shipping Service). Meaning the shipping lines that do not fall under custom compliancy (brexit).

For custom compliant routes the restriction remains that the POL **cannot be changed** on an existing booking and will require to make a new booking if you wish for your cargo to depart from a different port.

CODE	DESCRIPTION	VGM
ORKZEE	Cork - Zeebrugge	
ORKZEEGOT	Cork - Zeebrugge - Gothenburg	
ORKZEELEI	Cork - Zeebrugge - Leixoes	Required
ORKZEEESDR	Cork - Zeebrugge - Santander	Required
DUBRTM	Dublin - Rotterdam	Required
DUBRTMLEI	Dublin - Rotterdam - Leixoes	Required
DUBSDR	Dublin - Santander	Required
DUBZEE	Dublin - Zeebrugge	
DUBZEEEBJ	Dublin - Zeebrugge - Esbjerg	
DUBZEEGOT	Dublin - Zeebrugge - Gothenburg	
DUBZEELEI	Dublin - Zeebrugge - Leixoes	<i>Required</i>
EBJPUR	Esbjerg - Purfleet	
EBJZEE	Esbjerg - Zeebrugge	
EBJZEEORK	Esbjerg - Zeebrugge - Cork	
EBJZEEEDUB	Esbjerg - Zeebrugge - Dublin	
EBJZEELEI	Esbjerg - Zeebrugge - Leixoes	Required
EBJZEEESDR	Esbjerg - Zeebrugge - Santander	Required
GOTZEE	Gothenburg - Zeebrugge	
GOTZEEORK	Gothenburg - Zeebrugge - Cork	

GOTZEELEI	Gothenburg – Zeebrugge - Leixoes	Required
GOTZEESDR	Gothenburg – Zeebrugge - Santander	Required
GOTZEEDUB	Gothenburg – Zeebrugge - Dublin	
KGHRTM	Killingholme - Rotterdam	
KGHZEE	Killingholme - Zeebrugge	
LEIRTM	Leixoes - Rotterdam	Required
LEIRTMDUB	Leixoes – Rotterdam - Dublin	Required
LEIZEE	Leixoes - Zeebrugge	Required
LEIZEEORK	Leixoes – Zeebrugge - Cork	Required
LEIZEEDUB	Leixoes – Zeebrugge - Dublin	Required
LEIZEEEBJ	Leixoes – Zeebrugge - Esbjerg	Required
LEIZEEGOT	Leixoes – Zeebrugge – Gothenburg	Required
LPLDUBSDR	Liverpool – Dublin - Santander	Required
PURRTM	Purfleet - Rotterdam	
PURZEE	Purfleet - Zeebrugge	
RTMDUB	Rotterdam - Dublin	Required
RTMKGH	Rotterdam - Killingholme	
RTMLEI	Rotterdam - Leixoes	Required
RTMPUR	Rotterdam - Purfleet	
RTMZEE	Rotterdam – Zeebrugge	
RTMTEE	Rotterdam - Teesport	
SDRDUB	Santander - Dublin	Required
SDRZEE	Santander - Zeebrugge	Required
SDRZEEORK	Santander – Zeebrugge - Cork	Required
SDRZEEEBJ	Santander – Zeebrugge - Esbjerg	Required
SDRZEEGOT	Santander – Zeebrugge – Gothenburg	Required
SDRDUBLPL	Santander – Dublin - Liverpool	Required
TEERTM	Teesport – Rotterdam	
TEEZEE	Teesport - Zeebrugge	
ZEEDUB	Zeebrugge - Dublin	
ZEEEBJ	Zeebrugge - Esbjerg	
ZEEGOT	Zeebrugge - Gothenburg	
ZEEKGH	Zeebrugge - Killingholme	
ZEELEI	Zeebrugge - Leixoes	Required

ZEEORK	Zeebrugge - Cork	
ZEEPUR	Zeebrugge - Purfleet	
ZEESDR	Zeebrugge - Santander	Required
ZEERTM	Zeebrugge - Rotterdam	
ZEETEE	Zeebrugge - Teesport	
KGHXXX	Storage Killingholme	
PURXXX	Storage Purfleet	
RTMXXX	Storage Rotterdam	
ZEEXXX	Storage Zeebrugge	

Below RouteCodes are for specific Clients or cannot be used		
ZEETIL	Zeebrugge - Tilbury (only available for Wallenius Lines)	
TILZEE	Tilbury - Zeebrugge (only available for Wallenius Lines)	
DUBLPL	Dublin - Liverpool (cannot be used) see SDRDUBLPL	
LPLDUB	Liverpool - Dublin (cannot be used) see DUBLPLSDR	

8.13. Seal Code

CODE	DESCRIPTION
CA	Client seal
CU	Customs seal

8.14. Shipment Status Code

CODE	DESCRIPTION
Rejected	The Booking Request was rejected by the Shipping Line's Booking Agent
Booked	The Booking Request has been accepted and has become a Booking.
Checked in	The cargo is checked in at the port of loading (= Move)
On mafi	The cargo is put on a mafi (a type of cart with wheels to transport any type of cargo to/from the ship) (= Move)
On board	The cargo is loaded on board of the vessel (= Move)
Sailed	The vessel with the cargo has sailed from the port of loading. (= Move)

Arrived	The vessel with the cargo has arrived in the port of discharge. (= Move)
Discharged	The cargo is discharged from the vessel at the port of discharge (= Move)
Exgated	The cargo has left the port of discharge (= Move)
Cancelled	The Booking Request has been cancelled in C.WEB by the client.
Deleted	The Booking has been deleted from the database by a Booking Agent.
Untraced	From unmanaged ports no move information is received. Therefore, we can only mention 'untraced'.

8.15. Terminal Code (Shipment Status Location)

CODE	DESCRIPTION
BRIT	Brittannia quay
CAN	Canada quay
ZWEE	Swedish quay
ALB2	Albert II quay

8.16. Pre-carriage Transport Mode Code

CODE	DESCRIPTION
RL	Rail
VS	Vessel
BG	Barge

8.17. On-carriage Transport Mode Code

CODE	DESCRIPTION
RL	Rail
VS	Vessel
BG	Barge

8.18. VAT Code

CODE	DESCRIPTION
E00	services / goods free of VAT
H00	intracommunity delivery of goods : Vat to be reported by the customer
I00	intracommunity delivery of services : Vat to be reported by the customer
L00	0% VAT
L06	6% VAT
L12	12% VAT
L21	21 % VAT
LIN	delivery services / goods between members of the same VAT group
O00	real estate work
S00	scrap
V00	services / goods sold to companies outside EU

8.19. Charge Code

CODE	DESCRIPTION
ADM	Administration charge for units not booked via C.WEB
BAF	Bunker surcharge
C/C	Customs clearance
CAF	Currency surcharge
CTF	Customs T-forms
DRF	Driver's fare
DST	Destack surcharge
EUD	EU direct
FRE	Freight
HAG	IMCO fee Goteborg
HAZ	IMCO freight
HZP	Hazardous placards
MPL	MARPOL airpollution
OLS	Overlength surcharge
ONC	Oncarriage
OWE	Overweight surcharge
OWS	Overwidth surcharge
PLG	Plug on Vessel charge
PRE	Precarriage
SFD	Swedish fairways
SFO	Low sulphur fuel oil
STA	Stack surcharge
THC	Terminal handling charges
VAR	Various

8.20. Document type Code

CODE	DESCRIPTION	IMPORT	EXPORT
IM	Import into EU	√	
T1	Transit	√	√
T2	Transit	√	√
EX	Goods declaration export outside EU		√
CO	Community goods declaration (Special Territories)		√
EU	Goods declaration export to EFTA countries		√
302	NATO Form 302		√
TIR	TIR Carnet		√
ATA	ATA Carnet		√
T2L	Proof of union status		√
T2F	Proof of union status		√

8.21. Customs status Code

Mandatory and only applicable for Shipping line with RSS permit

CODE	DESCRIPTION
C	Union Goods – Free circulation
X	Union goods – Already under Export Procedure <i>ETD permit required</i>
T	Non-Union Goods - Under transit procedure <i>ETD permit required when valid until location = port of loading</i>

RSS and ETD permit info can be retrieved via Route Info.
See sections 3.6. & 5.4 Route Info

9. IMDG

9.1. DGD in .XML

To launch a booking request for hazardous cargo, you may either

- **Use <hazardousInfo>**: specify only the UN-numbers (for compatibility with previous EDI). You need to provide the DGD documents separately, preferably via mail to attachments@cweb.lu

OR

- **Use <imdglInfo>**: specify all required information in the XML, so no separate DGD documents are required.

So either <hazardousInfo> or <imdglInfo> may be used, not both!

The basic structure of <imdglInfo> is as follows:

<pre><bookingRequestBody> ... <imdglInfo count="nn"> <dgd>... [<dgd>...] [<declaration type="CPC">...] </imdglInfo> ... </bookingRequestBody></pre>	<p>nn = number of dgd blocks</p> <p>one per DGD document in the shipment, at least one.</p> <p>repeat for each additional DGD document if applicable</p> <p>separate CPC is required if more than one <dgd> block is present (unless unit is tank container)</p>
---	--

Each <dgd> block describes a single DGD document. One shipment may contain several DGDs.

<pre><dgd sequence="mm"> <partyInfo>... <partyInfo>... <transportDocumentNumber> <shipperReference> <freightForwarderReference> <cpc>... <product>... [<product>...] <declaration type="DGD">... </dgd></pre>	<p>sequence of dgd block – from 1 to imdglInfo/count)</p> <p>for partyCode SHIPPER, mandatory</p> <p>for partyCode CONSIGNEE, mandatory</p> <p>optional</p> <p>optional</p> <p>optional</p> <p>optional for Tank Containers, required otherwise</p> <p>one per UN number in this DGD, at least one.</p> <p>repeat for each additional UN number on this DGD, if applicable.</p> <p>declaration of compliance with IMDG regulations, required.</p>
---	---

Each <dgd> block must contain a <partyInfo> block for SHIPPER and for CONSIGNEE.

```

<partyInfo>
  <partyCode>          SHIPPER or CONSIGNEE
  <name>
  <address>
  <address2>
  <countryCode>
  <city>
</partyInfo>

```

Each <dgd> block must contain at least one <product> block, representing a hazardous good with UN number.

If several products are picked up in a single location, they may be listed in the same <dgd> block.

```

<product>
  <unNumber>          number only, without UN prefix (required)
  <properShippingName>  official name, literally (required)
  <technicalName>      without parentheses, see special provision 274
  <primaryClass>       without prefix 'class' or 'division' (required)
  <sublabel1>         subsidiary risk #1, without prefix 'class' or 'division' (if
                       applicable)
  <sublabel2>         subsidiary risk #2, without prefix 'class' or 'division' (if
                       applicable)
  <packingGroup>       PG (roman numbers), without prefix (if applicable)
  <marinePollutantInd> true/false (required)
  <flashpoint>         degrees Celsius (if applicable)
  <ems>                if applicable
  <numberOfPackages>  required
  <packageCode>       see chapter 6, "Used Codes" (required)
  <weight>            net weight in kg (required)
  <remarks>           any additional remarks or requirements
  <limitedQuantityInd> \
  <exceptedQuantityInd> /
  <emptyUncleanedInd> optional, false if not specified
  <wasteInd>          optional, false if not specified
  <elevatedTemperatureInd> optional, false if not specified
  <salvagePackageInd> optional, false if not specified
  <controlTemperature> degrees Celsius (if applicable)
  <emergencyTemperature> degrees Celsius (if applicable)
</product>

```

Each <dgd> block must contain a <declaration> block with type="DGD". By providing this information, the specified company/person agrees with the current version of the standard "shipper's declaration".

Each <dgd> block must also contain a <declaration> block with type="CPC", unless the shipment is a tank container.

If more than one <dgd> block is present for a single shipment, an additional "global" <declaration> block with type="CPC" is required.

This global declaration block has the same structure but appears below the <imdglInfo> block rather than below the <dgd> block.

By providing this information, the specified company/person agrees with the current version of the standard "container/vehicle packing certificate".

```
<declaration type="DGD | CPC">
  <companyName>           name of the company responsible for the good or shipment
  <declarantName>         name of company's employee authorized to provide the
                           declaration
  <declarantStatus>       e.g. owner, planner,...
  <place>
  <date>
  <signature>             declarant name in upper case
</declaration>
```

9.2. DGD in email attachment

You can send an email with the Dangerous Goods Declaration in attachment to attachments@cweb.lu.

For more info, please see 12. Attachment

10. Waste Info

10.1. Waste info .XML

To launch a booking request for Waste cargo

The basic structure of <wasteInfo> is as follows:

```

<bookingRequestBody>
...
<wasteList count="nn">
  <wasteInfo sequence="mm">
    <partyInfo>...
    <partyInfo>...
    <partyInfo>...
    <wasteName>...
    <euralCode>...
    <streamNumber>...
  </wasteInfo>
</wasteList>
...
</bookingRequestBody>

```

nn = number of waste blocks
 sequence of waste block
 for partyCode PRODUCER, mandatory
 for partyCode EXPORTER, mandatory
 for partyCode IMPORTER, mandatory
 name of the waste, mandatory
 eural code, mandatory
 streamnumber, optional

Each <waste> block must contain a <partyInfo> block for PRODUCER, EXPORTER and for IMPORTER.

```

<partyInfo>
  <partyCode>
  <name>
  <address>
  <countryCode>
  <city>
</partyInfo>

```

PRODUCER, EXPORTER or IMPORTER

TAG	DESCRIPTION	TYPE LENGTH	MAND COND	REMARKS
partyInfo	Can be repeated 3 times Mandatory for 'PRODUCER, EXPORTER' and 'IMPORTER' → in this order!!		M	
partyCode	Identifier of specified party	A/10	M	
name	Name	AN/200	M	
address	Address	AN/200	M	
countryCode	Country	A/2	M	See 8.4 Country Code
city	City	AN/200	M	

wasteName	Name of the waste	AN/200	M	
euralCode	Eural code	N*/7	M	Can be 2, 4 or 6 characters long with an additional asterix * indicating waste is dangerous (according to certain guidelines)
streamNumber	Streamnumber	N/20	O	

11. Consignment info

Units that require Consignment info cannot be handled on terminal until the ConsignmentInfo is received. This is for routes between EU and NON-EU countries and for bookings where the Customs Status of Goods field is used, pending the phasing out of “Seal&Customs” functionality in C.WEB.

Each of your bookings always refers to one cargo unit that can contain one or more consignments. Bookings for multiple cargo units referring to the same consignment will NOT be accepted.

There are two commands to communicate the ConsignmentInfo prior to arrival in the port of loading:

- cwebBookingRequest - ConsignmentInfo in the bookingRequest
- cwebConsignmentRequest - ConsignmentInfo separate (Can be used for solely updating ConsignmentInfo of an existing booking)

After customs clearance, you can request the release of cargo in the port of discharge with the following command:


- cwebConsignmentReleaseRequest
(Not for import UK, we receive the clearance information from MCP)

C.WEB will inform about:

- The import reference needed for Customs clearance
- Extra option: get feedback with consignment information
- Extra option: retrieve consignment info for a specific booking (can be used for parties that handle your customs procedure)
- Set and release of Customs Hold information.

C.WEB EDI role:

- A new C.web role “cwebedi_CUSTOMS_AGENT” is added with limited access solely to: consult/update ConsignmentInfo based up a specific booking reference.
<https://www.cweb.lu/edi/cwebConsignmentRequest>
<https://www.cweb.lu/edi/cwebConsignmentInfo>
(Can be used for EDI parties that handle your customs procedure)

- cwebedi_CLIENT
-  cwebedi_CUSTOMS_AGENT
- mclient_LOOKUP Can Manage consignments
- webbook_BYPASS_MAXREQUESTS
- webbook_CLIENT
- webbook_CPIN
- webbook_CUSTOMS_AGENT

Please be advised that the Consignment info procedure and fields are still subject to change.

11.1. Field description – ConsignmentRequest

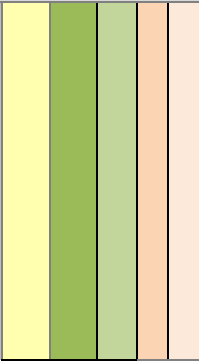
TAG	DESCRIPTION	TYPE/ LENGTH	MAN CON	REMARKS
header				
senderID	Identification of Sender	AN/8	M	
receiverID	Identification of Receiver	AN/8	M	Always 'CWEB'
replyMail	Our e-mail address		M	Always 'webmaster@cweb.lu'
msgDate	Date that message was generated (yyyyMMdd)	N/8	M	
msgTime	Time that message was generated (HH:MM:SS)	AN/8	M	
msgReference	Unique reference for this message	AN/26	M	
consignmentInfo				
				Starpoint when used in the bookingRequest
shippingLineReference	Reference of the shipping line. Always unique. Will be supplied in Booking Request Feedback once the Booking Request is/was accepted by an agent.	AN/10	C	Tag mandatory when using cwebConsignmentRequest. Optional when consignmentInfo is given within the bookingRequest (this tag already exists in the bookingRequest)

TAG	DESCRIPTION	TYPE/ LENGTH	MAN CON	REMARKS
consignConfInd	TRUE or FALSE “ I confirm that I have entered complete and correct Consignment Information for each Consignment comprised in this Unit’s booking request. I accept it is my risk that the Unit will not be permitted to enter the Terminal of Departure and/or will not be permitted to ship and/or will not be permitted to be released from the Terminal of Arrival if this Consignment Information is not complete or correct. I also undertake to arrange any mandatory visit of the Unit to a Border Inspection Post within 24 hours from scheduled vessel arrival. “	BOOLEAN	O	TRUE Must be provided before delivery in the port of loading
consignmentList				
consignment				
Can be repeated				
consignmentId	unique id for each consignment within a booking	AN/12	M	
nominatedAgent	Which nominated agent is to be used on consignment	AN/3	O	Only Westbound UK transports (Destin8)
typeOfGoods	C = “Goods Requiring Inventory Linked Declarations, Controlled Goods, Non-Union Goods.” S = “Staged Customs Control EIDR Eligible Goods” can no longer be used for sailings from 01/01/2022 No longer required 13/04/2023	AN/4	C	Mandatory for all Westbound shipments (EU to UK) Obsolete for Eastbound See 8.22 type of goods
gvmsInd	TRUE or FALSE To indicate that this consignment (gvms) is linked to the <gmrid> in the booking	BOOLEAN	O	Can only be used for Westbound laden units (EU to UK) for sailings from 01/01/2022
ggbNumber	Only for Eastbound (UK to NL) laden units	N/8	O	To provide a GGB-number when shipping from the UK to the Netherlands and declaring SPS-related consignment items At least one item must contain <spsInd>TRUE</spsInd>

TAG	DESCRIPTION	TYPE/ LENGTH	MAN CON	REMARKS
	consignee		C	See 11.1.4 Clarification on EORI numbers See 11.1.6 Clarification for units requiring EXS declaration
	name	AN/254	C	Either EORI number or name,address,city,post country & vat When EORI is used: If port of discharge is EU → EU EORI number must be used. If Port of discharge is UK → UK EORI number must be used See 11.1.1 ConsignmentRequest Matrix For the Mandatory fields for Westbound and Eastbound UK.
	address	AN/254	C	
	city	AN/254	C	
	postal	AN/20	C	
	country	AN/2	C	
	eori	AN/20	C	
	vat	AN/20	C	
	consignor		C	See 11.1.4 Clarification on EORI numbers See 11.1.6 Clarification for units requiring EXS declaration
	name	AN/254	C	Either EORI number or name,address,city,post country & vat When EORI is used: If port of discharge is EU → EU EORI number must be used.
	address	AN/254	C	
	city	AN/254	C	
	postal	AN/20	C	

TAG	DESCRIPTION	TYPE/ LENGTH	MAN CON	REMARKS	
	country	AN/2	C	If Port of discharge is UK → UK EORI number must be used See 11.1.1 ConsignmentRequest Matrix For the Mandatory fields for Westbound and Eastbound UK	
	eori	AN/20	C		
	vat	AN/20	C		
	notify	The customs party that can be notified upon arrival of the goods		O	
	name		AN/254	C	Either EORI number or name,address,city,post country & vat When EORI is used: If port of discharge is EU → EU EORI number must be used. If Port of discharge is UK → UK EORI number must be used
	address		AN/254	C	
	city		AN/254	C	
	postal		AN/20	C	
	country		AN/2	C	
	eori		AN/20	C	
	vat		AN/20	C	
	email		AN/254	O	
	consignedPlace	Location where the consignment was created (UN location code)	AN/5	O	
	receiptPlace	Location where the consignment is sent to (UN location code)	AN/5	O	
	documentType	The customs document type (exit document code)	AN/4	M	See section 8.20 Document type Code
	documentNr	The customs document number (MRN / DUCR / MUCR)	AN/50	O	Must be provided before delivery in the port of loading
	expiryDate	Document expiry date (must be after today)	N/8	C	(yyyyMMdd) Must be provided together with document for T1 and T2 docs before arrival the port of loading
validTo	Document valid to (Customs Office of Destination) (=Office of destination in c.web online)	AN/20	C	>= 8 AN positions For specific documents	

TAG	DESCRIPTION	TYPE/ LENGTH	MAN CON	REMARKS	
				Must be provided together with document for T1 and T2 docs before arrival the port of loading (Customs Office of Destination CODE)	
	transportDocumentType Only for Eastbound (UK to EU) laden units The customs document type of the transportDocumentNr can be: T1/T2/LRN/ATA/TIR/302	AN/4	O	Optional : When used: both transportDocumentType and transportDocumentNr must be filled This field is used when a consignment has both a UK Export (or EXS) document as well as a Transport document (such as T1) to obtain immediate clearance at the EU port of entry	
	transportDocumentNr Only for Eastbound (UK to EU) laden units (complementary customs document number)	AN/50	O	Optional : When used: both transportDocumentType and transportDocumentNr must be filled This field is used when a consignment has both a UK Export (or EXS) document as well as a Transport document (such as T1) to obtain immediate clearance at the EU port of entry	
	itemList				
	item	Can be repeated			
	shippingMarks	Marks and numbers of the goods	AN/20	O	
	numberOfPackages	Number of packages	N/5	M	The total amount of packages in a booking may not exceed 99999
	packageCode	UN code type of package	AN/4	M	
	commodityCode	HS code	N/10	M	Numeric, at least 6 numbers If HS code is not known then 8 zeros can be used "00000000"

TAG	DESCRIPTION	TYPE/ LENGTH	MAN CON	REMARKS	
	description	Description of the goods	AN/254	M	
	grossWeight	Gross weight (in kilos)	N/20	M	> 0
	nettoWeight	Netto weight (in kilos)	N/20	O	> 0 (<= grossWeight)
	unNumber	Number only, without UN prefix	AN/4	C	If IMDG goods are present
	primaryClass	'class' or 'division' without prefix	AN/6	C	If IMDG goods are present
	technicalName	Without parentheses, see special provision 274	AN/100	O	
	spsInd	TRUE or FALSE To indicate that the consignment item is SPS.	BOOLEAN	O	Sanitary and phytosanitary (SPS) measures are measures to protect humans, animals, and plants from diseases, pests, or contaminants.

11.1.1. ConsignmentRequest Matrix

Consignment Mandatory dataset for UK Border Process

Westbound UK

Temporary Storage Border Model (Destin8 Inventory Linked)

laden units	Port of loading BE	typeOfGoods, documentType, documentNr, description, #packages, grossWeight, packageCode
RETURN units	Port of loading BE	typeOfGoods, documentType, description, #packages, grossWeight, packageCode
laden units	Port of loading NL	typeOfGoods, documentType, documentNr, description, #packages, grossWeight
RETURN units	Port of loading NL	typeOfGoods, documentType, documentNr, description, #packages, grossWeight, packageCode

Additional fields laden units:

for EU - UK Transit to Final Destination

laden units	Port of loading BE/NL	validTo
-------------	-----------------------	---------

for GVMS

laden units	Port of loading BE/NL	gvmsInd (new)
-------------	-----------------------	---------------

Eastbound UK

Full consignment info as described in 11.1. Field description

Please provide MUCR in the field documentNr of the first consignments.

For consolidation shipments:

- Consolidate DUCR's into a MUCR Reference
- Enter the MUCR reference in the Document Number Field of the first Consignment
- Populate the Document Number for the other Consignments with a unique reference within the booking, (e.g. you can use the DUCR of this consignment)

11.1.2. Clarification on Westbound (EU -> UK) bookings from 01/01/2022

CLdN operates the “Temporary Storage Border Model” at Purfleet and Killingholme, with integration to GVMS. This allows for 2 ways to clear your goods at the border:

- Conventional Inventory Linked Entry

Any booking (except through transit) made will be entered onto Destin8 as a “TX” consignment which needs to be claimed and cleared by you/your customs broker in order for a release note to be generated.

In order to utilise this process, no additional steps require to be taken. Please provide your consignment information (document type/number and goods details).

- GVMS Entry

As per the UK Government’s announcement on 18/11 CLdN also allows entries that were prelodged and loaded into a GMR to be processed. This will still cause inventory records to be generated upon arrival, however these will be released upon arrival (pending customs control) at the UK port of entry immediately, thus allowing immediate collection.

In order to utilise this option, please provide the **GMR** in your booking, and indicate for each Consignment whether it is covered by the import entries in the GMR by setting/ticking the “gvmsInd”.

UPDATED 14/12/2022

Added: The combination of Temporary Storage and PreLodged entries (GVMS) within the same unit is not currently possible. If for a booking, 1 consignment is labelled with a GVMSindicator, the entire booking and all consignments are handled as a Prelodged movement with GMR. It is of critical importance that when you utilise the Prelodged (GVMS) process, all necessary entries are added to the GMR.

11.1.3. Clarification on Eastbound (UK -> EU) requirement for MUCR’s for units containing multiple Consignments

CLdN operates the “Temporary Storage Border Model” at Purfleet and Killingholme which imposes a requirement to **arrive** and **obtain P2P** upon Gate In at the UK port of exit for all Export declarations.

In order to be able to obtain P2P at the border for units containing multiple exports, we require the individual DUCR’s to be consolidated into a MUCR reference, and the MUCR must be added to the first consignment of your booking. If this does not happen, we will not be able to obtain P2P for all consignments in your unit and you are at risk of Exports not being finalized.

The use of “Arrived” (EX-A – Transport Mode at the Border 6) is **not** allowed.

11.1.4. Clarification on use of EORI numbers in bookings

Eastbound / UK -> EU

- All routes

Use EU EORI numbers OR if these are not available, which will be the case for most “consignors”, provide full address details

Westbound / EU -> UK

- Temporary Storage Border Model (Destin8 Inventory Linked)

EORI numbers are optional

If they are used, they MUST be GB EORI numbers. European consignors will usually not have this, so if client wants to provide details, use full address details

From 01/07/2022, GB EORI or full address details will become mandatory as part of the introduction of ENS on the UK side.

11.1.5. Clarification on Westbound (EU to UK) transit

CLdN only allows EU -> UK Transit bookings to either:

- Be discharged at the EU port of Exit, causing the need for clearance upon entry at the UK
- Move through to final destination, in which case the Transit needs to be discharged at final desitnation. For this a GMR is mandatory for office of transit purposes.

CLdN will not discharge T forms at the UK port of entry.

Practically:

Option 1: Transit to end at EU port of Exit

T = “Temporary Storage Border Model (Destin8 Inventory Linked)”

UK border process = T (Temporary Storage)

Type of goods = C (Goods Requiring Inventory Linked Declarations, Controlled Goods, Non-Union Goods if T1 / either if T2)

Doctype = T1/T2

Docnumber = MRN

Expiry date = as per document

Office of destination:

- Rotterdam: NL000510
- Zeebrugge: BE343000
- Vlissingen: NL000855

+ consignment mandatory data items as per 11.1.1

Option 2: Transit to end in UK (but not Tilbury or Immingham/Killingholme!) or beyond

Uk Border process = T

gmrlid required

Type of goods = C

gvmsInd To indicate that this consignment (gvms) is linked to the <gmrlid> (in the booking).

Doctype = T1/T2

Docnumber = MRN

Expiry date = as per document

Office of destination:

- Anything except: GB000074 & GB000149

+ consignment mandatory data items as per 11.1.1

11.1.6. Clarification for units requiring EXS declaration (Eastbound)

Protocol for UK – EU Bookings requiring EXS declarations from 01/10/2021

Empty & Uncleaned Empty Units – You perform the standalone EXS yourselves

- o **UK Border Process:** Temporary Storage
- o Select **Empty** at Booking Level
- o Create a **Consignment** (only one)
- o Provide Consignor/Consignee as below *
- o **Document Type:** EX
- o **Document Number:** EXS DUCR
- o Items not allowed

Return Packaging Units (Oral Declaration / By Conduct process) - You Perform the standalone EXS yourselves

- o **UK Border Process:** Temporary Storage
- o Select **Full** at Booking Level
- o Create a **Consignment** (new requirement for destination BE)
- o Complete Consignor / Consignee
- o **Document type:** EX
- o **Document Number:** EXS DUCR
- o Begin goods description with "RETURN"
- o Add at least 1 Consignment Item

Transit Units without UK Export declaration – You perform the standalone EXS yourselves

- o **UK Border Process:** 1 (MRN) or 4 (LRN)
- o Select **Full** at Booking Level
- o Create a **Consignment**
- o Complete Consignor / Consignee
- o **Document Type:** T1 / T2
- o **Document Number:** EXS DUCR/MUCR
- o Add at least 1 Consignment Item
- o Provide NCTS MRN/LRN in fields: transportDocumentType transportDocumentNr

Empty & Uncleaned Empty Units – You request CLdN to perform the EXS on your behalf

- o **UK Border Process:** E (EXS)
- o Select **Empty** at Booking Level
- o Create a **Consignment** (only one)
- o Provide Consignor / Consignee as below *
- o **Document Type:** EX
- o **Document No.:** Leave blanc
- o Items not allowed

Return Packaging (Oral Declaration / By Conduct process) - You request CLdN to perform the EXS on your behalf

- o **UK Border Process:** E (EXS)
- o Select **Full** at Booking Level
- o Create a **Consignment** (new requirement for destination BE)
- o Complete Consignor / Consignee as below *
- o **Document Type:** EX
- o **Document No.:** Leave blanc
- o Begin goods description with "RETURN"
- o Add at least 1 Consignment Item

Transit Units without UK Export declaration - You request CLdN to perform the EXS on your behalf

- o UK Border Process: **2 (MRN) or 5 (LRN)**
- o Select **Full** at Booking Level
- o Create a **Consignment**
- o Complete Consignor / Consignee as below *
- o **Document Type:** T1 / T2
- o **Document Number:** Transit MRN / LRN
- o Add at least 1 Consignment Item

*** Requirements regarding the provision of Consignor / Consignee Information for EXS bookings**

In order to be able to submit the EXS declaration on your behalf, Consignor/Consignee information must meet the following criteria:

- GB EORI Numbers **cannot** be used for EXS purposes; instead the use of Address information becomes mandatory. It is still possible to provide EU EORI numbers for the purpose of submitting the ENS declaration in Europe.

- Sometimes the Consignor / Consignee will be yourselves, in other occasions this will be your client. For that purpose the following applies:

- o **The Consignor / Consignee is yourselves** (usually the case when moving an empty unit): Leave Name/Address/Country/Zip/City/VAT blanc **to indicate you want CLdN to use the details held in your C.WEB profile** for the EXS declaration
 - o **The Consignor / Consignee is your client:** Please complete Name/Address/Country/Zip/City/VAT to enable us to submit the declaration on your behalf, with the information you have provided.
- It remains your responsibility to ensure you apply the correct information and booking protocol.

Summary can be found on the CWEB login page

[Link to Eastbound booking Matrix](#)

11.2. ConsignmentRequest example

URL:

<https://www.cweb.lu/edi/cwebConsignmentRequest> (POST method)

Example (westbound gvms)

```
<?xml version="1.0" encoding="UTF-8"?>
<cwebConsignmentRequest Version="1.0">
  <header>
    <senderID>HEADBIRD</senderID>
    <receiverID>CWEB</receiverID>
    <replyMail replyEvent="rejected,approved,invalid">per.ae@headbird.com</replyMail>
    <msgDate>20181130</msgDate>
    <msgTime>08:05:50</msgTime>
    <msgReference>test</msgReference>
  </header>
  <consignmentInfo>
    <shippingLineReference>60668390/8</shippingLineReference>
    <consignConfInd>TRUE</consignConfInd>
    <consignmentList>
      <consignment>
        <consignmentId>CON55236</consignmentId>
        <nominatedAgent>GB007</nominatedAgent>
        <gvmsInd>TRUE</gvmsInd>
        <consignee>
          <name>Mariott Hotels Resorts Suites</name>
          <address>RandVale Cottages 92</address>
          <city>Darion</city>
          <postal>5353</postal>
          <country>GB</country>
          <eori>GB04337727842716</eori>
          <vat>GB547358166</vat>
        </consignee>
        <consignor>
          <name>Stanley, Richard L Esq</name>
          <address>TUDOR COURT 158</address>
          <city>Desselgem</city>
          <postal>7505</postal>
          <country>BE</country>
          <eori>BE821516467258341</eori>
          <vat>BE046106260</vat>
        </consignor>
        <notify>
          <name>A R Packaging</name>
          <address>CASTLEVENNON ROAD 113</address>
          <city>Atherton</city>
          <postal>6081</postal>
          <country>BE</country>
          <eori>BE618281015302355</eori>
        </notify>
      </consignment>
    </consignmentList>
  </consignmentInfo>
</cwebConsignmentRequest>
```

```

        <vat>BE073816103</vat>
        <email>walker.dry@gmail.com</email>
    </notify>
    <consignedPlace>ABCDE</consignedPlace>
    <receiptPlace>BEZEE</receiptPlace>
    <documentType>T1</documentType>
    <documentNr>18BE05408011676305</documentNr>
    <expiryDate>20220125</expiryDate>
    <validTo>BE321000</validTo>
    <itemList>
        <item>
            <shippingMarks>CCC236</shippingMarks>
            <numberOfPackages>4</numberOfPackages>
            <packageCode>VG</packageCode>
            <commodityCode>123456</commodityCode>
            <description>varia pallette 1</description>
            <grossWeight>2400</grossWeight>
            <nettoWeight>1200</nettoWeight>
            <unNumber>1950</unNumber>
            <primaryClass>2.1</primaryClass>
            <technicalName>allerlei</technicalName>
        </item>
        <item>
            <shippingMarks>CCC237</shippingMarks>
            <numberOfPackages>5</numberOfPackages>
            <packageCode>VG</packageCode>
            <commodityCode>123456</commodityCode>
            <description>varia pallette 2</description>
            <grossWeight>2400</grossWeight>
            <nettoWeight>1200</nettoWeight>
            <unNumber>3205</unNumber>
            <primaryClass>4.2</primaryClass>
            <technicalName>allerlei</technicalName>
            <spsInd>TRUE</spsInd>
        </item>
    </itemList>
</consignment>
<consignment>
    <consignmentId>CON55288</consignmentId>
    <gvmsInd>TRUE</gvmsInd>
    <consignee>
        <name>Johnson</name>
        <address>ZEESTRAAT</address>
        <city>BRUGGE</city>
        <postal>2000</postal>
        <country>BE</country>
        <eori>BE043377278499999</eori>
        <vat> BE043377278499</vat>
    </consignee>
    <consignor>
        <name>Johnson</name>
        <address>Battersby Lane</address>

```

```

        <city>Dublin</city>
        <postal>2000</postal>
        <country>IR</country>
        <eori></eori>
        <vat>45466464646</vat>
    </consignor>
    <notify>
        <name>Janssens</name>
        <address>Church street 5</address>
        <city>Dublin</city>
        <postal>2000</postal>
        <country>IR</country>
        <eori>BE04337727842716</eori>
        <vat>45466464646</vat>
        <email>wker.drry@gmail.com</email>
    </notify>
    <consignedPlace>BECAN</consignedPlace>
    <receiptPlace>BECAN</receiptPlace>
    <documentType>T1</documentType>
    <documentNr>18BE05408011676399</documentNr>
    <expiryDate>20220205</expiryDate>
    <validTo>BE321000</validTo>
    <itemList>
        <item>
            <shippingMarks>CCC238</shippingMarks>
            <numberOfPackages>6</numberOfPackages>
            <packageCode>VG</packageCode>
            <commodityCode>123456</commodityCode>
            <description>varia pallette 3</description>
            <grossWeight>2400</grossWeight>
            <nettoWeight>1200</nettoWeight>
            <unNumber>1950</unNumber>
            <primaryClass>2.1</primaryClass>
            <technicalName>allerlei</technicalName>
        </item>
        <item>
            <shippingMarks>CCC239</shippingMarks>
            <numberOfPackages>7</numberOfPackages>
            <packageCode>VG</packageCode>
            <commodityCode>123456</commodityCode>
            <description>varia pallette 4</description>
            <grossWeight>2400</grossWeight>
            <nettoWeight>1200</nettoWeight>
            <unNumber>3205</unNumber>
            <primaryClass>4.2</primaryClass>
            <technicalName>allerlei</technicalName>
        </item>
    </itemList>
</consignment>
</consignmentList>
</consignmentInfo>
</cwebConsignmentRequest>

```

11.3. Consignment in the BookingRequest example

URL: <https://www.cweb.lu/edi/cwebBookingRequest> (POST method)

Example:

```
<?xml version="1.0" encoding="utf-8"?>
<cwebBookingRequest Version="1.0">
  <header>
    <senderID>HEADBIRD</senderID>
    <receiverID>CWEB</receiverID>
    <replyMail replyEvent="rejected,transferred,approved,invalid">
      peter.arfeuille@headbird.com</replyMail>
    <msgDate>20181130</msgDate>
    <msgTime>08:05:50</msgTime>
    <msgReference>BookingRequest 015</msgReference>
  </header>
  <createOrModify>
    <contactName>Stan Bons</contactName>
    <contactPhone>+32 479 984555</contactPhone>
    <contactEmail>stes@heard.com</contactEmail>
    <bookingRequestBody>
      <clientReference>SBCT0512008</clientReference>
      <transportOrderReference>SBCT0512008</transportOrderReference>
      <contractCode>HEADBIRD</contractCode>
      <routeCode>ZEEPUR</routeCode>
      <was>FALSE</wasInd>
      <shipsOptionInd>FALSE</shipsOptionInd>
      <sailingDate>20190402</sailingDate>
      <sailingTime>16:00</sailingTime>
      <equipmentCode>TRLR</equipmentCode>
      <unitNumber>SBCT0512008</unitNumber>
      <fullInd>TRUE</fullInd>
      <customsStatus>R</customsStatus>
      <ukBorderProcess>T</ukBorderProcess>
      <gmrlId>GMRI00002KW2</gmrlId>
      <goodDescription>bricks</goodDescription>
      <releasee>ABC</releasee>
      <measurementInfo>
        <length>13.60</length>
        <tareWeight>1500</tareWeight>
        <cargoWeight>5000</cargoWeight>
        <vgm>6700</vgm>
        <vgmResponsible>FRANK DINGES</vgmResponsible>
      </measurementInfo>
      <consignmentInfo>
        <consignConfInd>TRUE</consignConfInd>
        <consignmentList>
          <consignment>
            <consignmentId>SBCT0512008</consignmentId>
            <gvmsInd>TRUE</gvmsInd>
          </consignment>
        </consignmentList>
      </consignmentInfo>
    </bookingRequestBody>
  </createOrModify>
</cwebBookingRequest>
```

```

<name>Booma</name>
<address>Oever 3</address>
<city>Antwerpen</city>
<postal>2000</postal>
<country>BE</country>
<eori>BE0123456789</eori>
<vat>BE0123456789</vat>
</consignee>
<consignor>
  <name>boma</name>
  <address>Oeverlaan</address>
  <city>Merksem</city>
  <postal>2160</postal>
  <country>BE</country>
  <eori>BE0987654321</eori>
  <vat>BE0987654321</vat>
</consignor>
<notify>
  <name>Notify</name>
  <address>Not address</address>
  <city>Not city</city>
  <postal>1234</postal>
  <country>BE</country>
  <eori>BE0123456789</eori>
  <vat>BE0123456789</vat>
  <email>ke.dke@headbird.com</email>
</notify>
<consignedPlace>BEANR</consignedPlace>
<receiptPlace>BEZEE</receiptPlace>
<documentType>T1</documentType>
<documentNr>18BE0126789</documentNr>
<expiryDate>20190102</expiryDate>
<validTo>GB000149</validTo>
<itemList>
  <item>
    <shippingMarks>PALL01</shippingMarks>
    <numberOfPackages>4</numberOfPackages>
    <packageCode>VG</packageCode>
    <commodityCode>123456</commodityCode>
    <description>BRIKS</description>
    <grossWeight>2400</grossWeight>
    <nettoWeight>1200</nettoWeight>
    <unNumber>1950</unNumber>
    <primaryClass>2.1</primaryClass>
    <technicalName>chromaliet</technicalName>
    <spsInd>FALSE</spsInd>
  </item>
  <item>
    <shippingMarks>PALL02</shippingMarks>
    <numberOfPackages>10</numberOfPackages>
    <packageCode>VG</packageCode>
    <commodityCode>123456</commodityCode>
    <description>snoep in dozen</description>
    <grossWeight>2400</grossWeight>
  </item>

```

```

    <nettoWeight>1200</nettoWeight>
    <unNumber>3205</unNumber>
    <primaryClass>4.2</primaryClass>
    <technicalName>parmenticks</technicalName>
  </item>
</itemList>
</consignment>
</consignmentList>
</consignmentInfo>
<partyInfo>
  <partyCode>SHIPPER</partyCode>
  <name>Containers nv</name>
  <address>Sneeuwbeslaan 14</address>
  <countryCode>BE</countryCode>
  <city>2610 Wilrijk</city>
  <vat>BE0475233187</vat>
</partyInfo>
<partyInfo>
  <partyCode>CONSIGNEE</partyCode>
  <name>Containers nv</name>
  <address>Sneeuwbeslaan 14</address>
  <countryCode>BE</countryCode>
  <city>2610 Wilrijk</city>
  <vat>BE0475233187</vat>
</partyInfo>
</bookingRequestBody>
</createOrModify>
</cwebBookingRequest>

```

11.4. Field description – ConsignmentReleaseRequest

TAG	DESCRIPTION	TYPE/ LENGTH	MAN CON	REMARKS
cwebConsignmentReleaseRequest Version="1.0"				
Header				
senderID	Identification of Sender	AN/8	M	
receiverID	Identification of Receiver	AN/8	M	Always 'CWEB'
replyMail	Our e-mail address			Always 'webmaster@cweb.lu'
msgDate	Date that message was generated (yyyyMMdd)	N/8	M	
msgTime	Time that message was generated (HH:MM:SS)	AN/8	M	
msgReference	Unique reference for this message	AN/26	M	
consignmentInfo				
shippingLineReference	Reference of the shipping line. Always unique. Will be supplied in Booking Request Feedback once the Booking Request is/was accepted by an agent.	AN/10	M	
consignmentList				
Consignment				
	Can be repeated			
consignmentId	unique id for each consignment within a booking	AN/10	M	
documentType	The customs document type (exit document code)	AN/4	M	
documentNr	The customs document number (MRN / DUCR / MUCR)	AN/50	M	

11.5. ConsignmentReleaseRequest example

URL:

<https://www.cweb.lu/edi/cwebConsignmentReleaseRequest> (POST method)

(Not for import UK, we receive this information from MCP)

Example:

```
<?xml version="1.0" encoding="UTF-8"?>
<cwebConsignmentReleaseRequest Version="1.0">
  <header>
    <senderID>HEADBIRD</senderID>
    <receiverID>CWEB</receiverID>
    <replyMail replyEvent="rejected,approved,invalid">per.ae@headbird.com</replyMail>
    <msgDate>20181130</msgDate>
    <msgTime>08:05:50</msgTime>
    <msgReference>Release test</msgReference>
  </header>
  <consignmentInfo>
    <shippingLineReference>47122283/2</ shippingLineReference >
    <consignmentList>
      <consignment>
        <consignmentId>CON55237</consignmentId>
        <documentType>EX</documentType>
        <documentNr>07CZ0662002353WK35</documentNr>
      </consignment>
      <consignment>
        <consignmentId>CON55236</consignmentId>
        <documentType>EX</documentType>
        <documentNr>07EE12345681234567</documentNr>
      </consignment>
    </consignmentList>
  </consignmentInfo>
</cwebConsignmentReleaseRequest>
```

11.6. Feedback with consignment info

URL:

<https://www.cweb.lu/edi/cwebBookAndConsignmentFeedback> (GET method)

Example:

Tag `consignmentsType` indicates that the response shows EXPORT or IMPORT `ConsignmentInfo`.

```
<?xml version="1.0" encoding="utf-8"?>
<cwebBookingRequestFeedback version="1.0">
  <header>
    <senderID>CWEB</senderID>
    <receiverID>parfeuil</receiverID>
    <replyMail>webmaster@cweb.lu</replyMail>
    <msgDate>20190117</msgDate>
    <msgTime>09:14:59</msgTime>
    <msgReference>20190117091458_90_00000000</msgReference>
  </header>
  <created>
    <clientReference>AAAFF334</clientReference>
    <shippingLineReference>50849884/7</shippingLineReference>
    <bookingRequestId>4683882</bookingRequestId>
    <transportOrderReference>5558866Ref1</transportOrderReference>
    <currentBookingInfo>
      <bookingRequestBody>
        <clientReference>AAAFF334</clientReference>
        <shippingLineReference>50848824/7</shippingLineReference>
        <transportOrderReference>5558866Ref1</transportOrderReference>
        <contractCode>HEADBIRD</contractCode>
        <routeCode>ZEEPUR</routeCode>
        <shipsOptionInd>>false</shipsOptionInd>
        <sailingDate>20190402</sailingDate>
        <sailingTime>16:00</sailingTime>
        <arrivalDate>20190402</arrivalDate>
        <arrivalTime>23:59</arrivalTime>
        <equipmentCode>CONT</equipmentCode>
        <unitNumber>DDUU321321/8</unitNumber>
        <fullInd>>true</fullInd>
        <customsStatus>R</customsStatus>
        <ukBorderProcess>T</ukBorderProcess>
        <goodDescription>FishnChips</goodDescription>
        <releasee>ABC</releasee>
        <measurementInfo>
          <length>13.60</length>
          <tareWeight>1500</tareWeight>
          <cargoWeight>5000</cargoWeight>
          <vgm>6700</vgm>
          <vgmResponsible>VPETER SMET</vgmResponsible>
          <vgmDtm>20181217</vgmDtm>
        </measurementInfo>
        <lofolInd>>true</lofolInd>
      </bookingRequestBody>
    </currentBookingInfo>
  </created>
</cwebBookingRequestFeedback>
```

```

<urgencyInd>>false</urgencyInd>
<wasteInd>>false</wasteInd>
<animalByproductInd>>false</animalByproductInd>
<lateArrivalInd>>false</lateArrivalInd>
<noStackAtArrivalInd>>false</noStackAtArrivalInd>
<partyInfo>
  <partyCode>CONSIGNEE</partyCode>
  <name>Containers nv</name>
  <address>Sneeuwbeslaan 14</address>
  <countryCode>BE</countryCode>
  <city>2610 Wilrijk</city>
  <vat>BE0475233187</vat>
</partyInfo>
</bookingRequestBody>
<fileNumber>9.55.022</fileNumber>
<shippingLine>CLdN ro-ro sa</shippingLine>
<vesselName>Celestine</vesselName>
<pinCode>5555</pinCode>
<shipmentStatusCode>Booked</shipmentStatusCode>
<standbyInd>>false</standbyInd>
<otherSailingInd>>false</otherSailingInd>
</currentBookingInfo>
<consignmentInfo>
  <consignmentsType>EXPORT</consignmentsType>
  <consignConfInd>>true</consignConfInd>
  <consignmentList>
    <consignment>
      <consignmentId>45957656</consignmentId>
      <gvmsInd>TRUE</gvmsInd>
      <consignee>
        <name>GRRRT</name>
        <address>Wood</address>
        <city>Athers</city>
        <postal>S713NL</postal>
        <country>GB</country>
        <eori>
          </eori>
        <vat>GB2270999999</vat>
      </consignee>
      <consignor>
        <name>Europe LTD</name>
        <address>Nijverheidstraat 22</address>
        <city>Berchem</city>
        <postal>2600</postal>
        <country>NL</country>
        <eori>
          </eori>
        <vat>NL006193888888</vat>
      </consignor>
      <notify>
        <name>
          </name>
        <address>
          </address>
      </notify>
    </consignment>
  </consignmentList>
</consignmentInfo>

```

```

<city>
</city>
<postal>
</postal>
<country>
</country>
<eori>
</eori>
<vat>
</vat>
<email>
</email>
</notify>
<consignedPlace>
</consignedPlace>
<receiptPlace>
</receiptPlace>
<documentType>EU</documentType>
<documentNr>21BEE000008497LLLL</documentNr>
<expiryDate>
</expiryDate>
<validTo>
</validTo>
<consignmentReferenceNumber>
</consignmentReferenceNumber>
<itemList>
  <item>
    <shippingMarks>
    </shippingMarks>
    <numberOfPackages>24</numberOfPackages>
    <packageCode>PK</packageCode>
    <commodityCode>57049000</commodityCode>
    <description>tapijten</description>
    <grossWeight>9040</grossWeight>
    <nettoWeight>0</nettoWeight>
    <unNumber>
    </unNumber>
    <primaryClass>
    </primaryClass>
    <technicalName>
    </technicalName>
  </item>
</itemList>
</consignment>
</consignmentList>
</consignmentInfo>
</created>
</cwebBookingRequestFeedback>

```

11.7. Field description - Consignment info

With the ConsignmentInfo you can retrieve the current ConsignmentInfo for one booking.

- If there is Import ConsignmentInfo then the Import Consignment info is shown otherwise the Export ConsignmentInfo will be shown.

TAG	DESCRIPTION	TYPE/ LENGTH	MAN CON	REMARKS
cwebConsignmentInfo Version="1.0"				
header				
senderID	Identification of Sender	AN/8	M	
receiverID	Identification of Receiver	AN/8	M	Always 'CWEB'
replyMail	Our e-mail address			Always 'webmaster@cweb.lu'
msgDate	Date that message was generated (yyyyMMdd)	N/8	M	
msgTime	Time that message was generated (HH:MM:SS)	AN/8	M	
msgReference	Unique reference for this message	AN/26	M	
consignmentInfo				
shippingLineReference	Reference of the shipping line. Always unique. Will be supplied in Booking Request Feedback once the Booking Request is/was accepted by an agent.	AN/10	M	
lloydsNr	Unique number which identifies a ship. Unique number for each ship	AN/8		
conveyanceRefPol	Conveyance Reference POL	N/5		
conveyanceRefPod	Conveyance Reference POD	N/6		

11.8. Consignment info - example

URL:

<https://www.cweb.lu/edi/cwebConsignmentInfo> (POST method)

All fields described in 11.1 Field description are returned in the response.

- 1) With one additional field <consignmentReferenceNumber> (consignment reference number for customs)
Field structure for:
 - **Belgium** (BL)
ScaCode of the shipping line + 00 + O/REF + seqnr Consignment
example: **CBFS00606293360004**
Cuscar Afschrijfnummer
 - **Netherlands**
ScaCode of the shipping line + 00 + O/REF + seqnr Consignment
example: **CLVW0060629394001**
Zendingsnummer Portbase MID melding
 - **UK**
UVI + I + O/REF + seqnr Consignment
example: **93353260629398003**
For Inventory Linked entries, the UVI + Unit number is to be utilised when claiming cargoes in Destin8
- 2) **IloydsNr**
Unique number to identify a ship.
Example: L9337353
- 3) **conveyanceRefPol**
Conveyance Reference POL
- 4) **conveyanceRefPod**
Conveyance Reference POD

Example Post:

```
<?xml version="1.0" encoding="utf-8"?>
<cwebConsignmentInfo Version="1.0">
  <header>
    <senderID>HEADBIRD</senderID>
    <receiverID>CWEB</receiverID>
    <replyMail replyEvent="rejected,invalid">
      peter.arfeuille@headbird.com</replyMail>
    <msgDate>20181130</msgDate>
    <msgTime>08:05:50</msgTime>
    <msgReference>con5566448575</msgReference>
  </header>
  <consignmentInfo>
```

```
<shippingLineReference>50850693/4</shippingLineReference>
</consignmentInfo>
</cwebConsignmentInfo>
```

Example Response:

Tag consignmentsType indicates if the response shows EXPORT or IMPORT ConsignmentInfo.

Example response EXPORT

```
<?xml version="1.0" encoding="utf-8"?>
<cwebConsignmentInfoReceipt version="1.0">
  <header>
    <senderID>CWEB</senderID>
    <receiverID>ediFixer</receiverID>
    <replyMail>webmaster@cweb.lu</replyMail>
    <msgDate>20190307</msgDate>
    <msgTime>11:34:19</msgTime>
    <msgReference>20190307113419_90_00000003</msgReference>
    <yourMsgReference>con5566448575</yourMsgReference>
  </header>
  <shippingLineReference>50850799/2</shippingLineReference>
  <consignmentInfo>
    <consignmentsType>EXPORT</consignmentsType>
    <consignConfInd>false</consignConfInd>
    <lloydsNr>L9376696</lloydsNr>
    <conveyanceRefPol>12345</conveyanceRefPol>
    <conveyanceRefPod>123456</conveyanceRefPod>
    <consignmentList>
      <consignment>
        <consignmentId>CON0003</consignmentId>
        <gvmsInd>TRUE</gvmsInd>
        <consignee>
          <name>BRISTOL</name>
          <address>Oever 3</address>
          <city>Antwerpen</city>
          <postal>2000</postal>
          <country>BE</country>
          <eori>BE0123456789</eori>
          <vat>BE0123456789</vat>
        </consignee>
        <consignor>
          <name>EVERGREEN</name>
          <address>Ovingale lane</address>
          <city>Liverpool</city>
          <postal>2160</postal>
          <country>UK</country>
          <eori>BE0987654321</eori>
          <vat>BE0987654321</vat>
        </consignor>
        <notify>
          <name>Notify</name>
          <address>Not address</address>
          <city>Not city</city>
          <postal>1234</postal>
```

```

<country>BE</country>
<eori>BE0123456789</eori>
<vat>BE0123456789</vat>
<email>ke.de@headbird.com</email>
</notify>
<consignedPlace>BEANR</consignedPlace>
<receiptPlace>BEZEE</receiptPlace>
<documentType>T1</documentType>
<documentNr>18BE0126789</documentNr>
<expiryDate>20190110</expiryDate>
<validTo>GB000149</validTo>
<consignmentReferenceNumber></consignmentReferenceNumber>
<itemList>
  <item>
    <shippingMarks>99SSS/1</shippingMarks>
    <numberOfPackages>4</numberOfPackages>
    <packageCode>VG</packageCode>
    <commodityCode>123456</commodityCode>
    <description>BRIKS</description>
    <grossWeight>2400</grossWeight>
    <nettoWeight>1200</nettoWeight>
    <unNumber>1950</unNumber>
    <primaryClass>2.1</primaryClass>
    <technicalName>JSTO HARD TYPE2</technicalName>
  </item>
  <item>
    <shippingMarks>AGGG547</shippingMarks>
    <numberOfPackages>10</numberOfPackages>
    <packageCode>VG</packageCode>
    <commodityCode>123456</commodityCode>
    <description>PANTS</description>
    <grossWeight>2400</grossWeight>
    <nettoWeight>1200</nettoWeight>
    <unNumber>3300</unNumber>
    <primaryClass>4.1</primaryClass>
    <technicalName>NON CLEANED PAINTED FABRICS</technicalName>
  </item>
  <item>
    <shippingMarks>966SS/1</shippingMarks>
    <numberOfPackages>99</numberOfPackages>
    <packageCode>BG</packageCode>
    <commodityCode>153456</commodityCode>
    <description>MILK</description>
    <grossWeight>2400</grossWeight>
    <nettoWeight>1200</nettoWeight>
    <unNumber></unNumber>
    <primaryClass></primaryClass>
    <technicalName></technicalName>
  </item>
  <item>
    <shippingMarks>AGDDDGG547</shippingMarks>
    <numberOfPackages>11</numberOfPackages>
    <packageCode>BG</packageCode>
    <commodityCode>123556</commodityCode>
    <description>SNOEKERS</description>
    <grossWeight>2450</grossWeight>
    <nettoWeight>1400</nettoWeight>
    <unNumber></unNumber>
    <primaryClass></primaryClass>
  </item>

```



```

    <technicalName></technicalName>
  </item>
</itemList>
</consignment>
<consignment>
  <consignmentId>CON0004</consignmentId>
  <gvmsInd>TRUE</gvmsInd>
  <consignee>
    <name>BRISTOL</name>
    <address>Oever 3</address>
    <city>Antwerpen</city>
    <postal>2000</postal>
    <country>NL</country>
    <eori>BE0123456789</eori>
    <vat>BE0123456789</vat>
  </consignee>
  <consignor>
    <name>EVERGREEN</name>
    <address>Ovingale lane</address>
    <city>Liverpool</city>
    <postal>2160</postal>
    <country>UK</country>
    <eori>BE0987654321</eori>
    <vat>BE0987654321</vat>
  </consignor>
  <notify>
    <name>Notify</name>
    <address>Not address</address>
    <city>Not city</city>
    <postal>1234</postal>
    <country>BE</country>
    <eori>BE0123456789</eori>
    <vat>BE0123456789</vat>
    <email>ke.de@headbird.com</email>
  </notify>
  <consignedPlace>BEANR</consignedPlace>
  <receiptPlace>BEZEE</receiptPlace>
  <documentType>T1</documentType>
  <documentNr>18BE0126789</documentNr>
  <expiryDate>20190110</expiryDate>
  <validTo>GB000149</validTo>
  <consignmentReferenceNumber></consignmentReferenceNumber>
</itemList>
  <item>
    <shippingMarks>99SSS/1</shippingMarks>
    <numberOfPackages>4</numberOfPackages>
    <packageCode>VG</packageCode>
    <commodityCode>123456</commodityCode>
    <description>BRIKS</description>
    <grossWeight>2400</grossWeight>
    <nettoWeight>1200</nettoWeight>
    <unNumber>1950</unNumber>
    <primaryClass>2.1</primaryClass>
    <technicalName>JSTONATED IN FROMING THING</technicalName>
  </item>
  <item>
    <shippingMarks>AGGG547</shippingMarks>
    <numberOfPackages>10</numberOfPackages>
    <packageCode>VG</packageCode>

```

```

    <commodityCode>123456</commodityCode>
    <description>PANTS</description>
    <grossWeight>2400</grossWeight>
    <nettoWeight>1200</nettoWeight>
    <unNumber>3300</unNumber>
    <primaryClass>4.1</primaryClass>
    <technicalName>NON CLEANED PAINTED FABRICS</technicalName>
  </item>
</item>
  <shippingMarks>966SS/1</shippingMarks>
  <numberOfPackages>99</numberOfPackages>
  <packageCode>BG</packageCode>
  <commodityCode>153456</commodityCode>
  <description>MILK</description>
  <grossWeight>2400</grossWeight>
  <nettoWeight>1200</nettoWeight>
  <unNumber></unNumber>
  <primaryClass></primaryClass>
  <technicalName></technicalName>
</item>
</item>
  <shippingMarks>AGDDDGG547</shippingMarks>
  <numberOfPackages>11</numberOfPackages>
  <packageCode>BG</packageCode>
  <commodityCode>123556</commodityCode>
  <description>SNOEKERS</description>
  <grossWeight>2450</grossWeight>
  <nettoWeight>1400</nettoWeight>
  <unNumber></unNumber>
  <primaryClass></primaryClass>
  <technicalName></technicalName>
</item>
</itemList>
</consignment>
</consignmentList>
</consignmentInfo>
</cwebConsignmentInfoReceipt>

```

Example response IMPORT

```

<?xml version="1.0" encoding="utf-8"?>
<cwebConsignmentInfoReceipt version="1.0">
  <header>
    <senderID>CWEB</senderID>
    <receiverID>ediFixer</receiverID>
    <replyMail>webmaster@cweb.lu</replyMail>
    <msgDate>20190307</msgDate>
    <msgTime>10:51:14</msgTime>
    <msgReference>20190307105114_90_0000001</msgReference>
    <yourMsgReference>con5566448575</yourMsgReference>
  </header>
  <shippingLineReference>40857570/5</shippingLineReference>
  <consignmentInfo>
    <consignmentsType>IMPORT</consignmentsType>

```

```

<consignConflnd>>false</consignConflnd>
<lloydsNr>L9376696</lloydsNr>
<conveyanceRefPol>541976</conveyanceRefPol>
<conveyanceRefPod>46575</conveyanceRefPod>
<consignmentList>
  <consignment>
    <consignmentId>CON005</consignmentId>
    <gvmsInd>>false</gvmsInd>
    <consignee>
      <name>Mhys Foundry Ltd.</name>
      <address>High Street 35</address>
      <city>Purfleet</city>
      <postal>RM19 1QB</postal>
      <country>GB</country>
      <eori></eori>
      <vat>GB354851239</vat>
    </consignee>
    <consignor>
      <name>Kasda Construction NV</name>
      <address>Overbeeckstraat 15</address>
      <city>Rotterdam</city>
      <postal>1016 LV</postal>
      <country>NL</country>
      <eori></eori>
      <vat>NL048753619B25</vat>
    </consignor>
    <notify>
      <name></name>
      <address></address>
      <city></city>
      <postal></postal>
      <country></country>
      <eori></eori>
      <vat></vat>
      <email></email>
    </notify>
    <consignedPlace></consignedPlace>
    <receiptPlace></receiptPlace>
    <documentType></documentType>
    <documentNr></documentNr>
    <expiryDate></expiryDate>
      <validTo></validTo>
      <consignmentReferenceNumber>CLVW000452000000</consignmentReferenceNumber>
    <itemList>
      <item>
        <shippingMarks>klohn3</shippingMarks>
        <numberOfPackages>50</numberOfPackages>
        <packageCode>BG</packageCode>
        <commodityCode>4700900</commodityCode>
        <description>PANTS</description>
        <grossWeight>5000</grossWeight>
        <nettoWeight>1500</nettoWeight>
        <unNumber></unNumber>
        <primaryClass></primaryClass>
        <technicalName></technicalName>
      </item>
    </itemList>
  </consignment>
</consignmentList>

```

</consignmentInfo>
</cwebConsignmentInfoReceipt>

12. Attachment

All relevant documents that need to accompany the cargo (e.g. DGD, VGM, operating manual for special machinery...) can be sent to the shipping line via attachments@cweb.lu.

The attachments are automatically linked to the right request. To be able to do this, the email subject must consist of the contract code followed by a colon and the client reference.

contract:clientreference

In order to allow one single client reference for the round trip, the route can be added to the email subject. Use a colon and add the route code as to be found in 8.12.

Note: For Multileg shipments only specify the first and last port (not the intermediate ports).

contract:clientreference:route

We do not send a reply as this may encourage spam. In case of errors we will inform you.

The attachments from the email are added to the request as a 'modification request' that needs to be validated by the shipping line's agent.

The action is executed by a 'generic user' as the real C.WEB user is not known at the moment the email is received. In the Request History, however, the sender's email address is displayed.

13. Goods description – Guidelines

13.1. General

C.WEB displays a warning message (shown below) when submitting a request with following goods description, either singly or combined.

As from the 1st October 2012 it will be unable to submit requests with these generic descriptions!

"alg", "algemene", "cargo", "cartons", "consumer", "divers", "diverse", "diversen", "exxonmobil", "general", "goederen",	"goods", "harmless", "misc", "miscellaneous", "n h", "nhc", "non haz", "non hazardous", "null", "onderdelen", "ongevaarlijk",	"ongevaarlijke", "others", "materials", "parts", "products", "unknown", "varia", "various"
--	---	---

Some examples:

"parts" is unacceptable, but

"pallets" is unacceptable, but

"general cargo" is unacceptable.

"Harmless chemicals" is acceptable.

"Car parts" is acceptable.

"empty pallets" is acceptable.

13.2. Oral Declaration For Empty Return Packaging / Racks / Loading Boards not subject to a sales transaction

If you want to apply an “Oral Declaration” to obtain an automatic release of your inbound empty units or units containing return packaging/racks, please start the description of the goods with the keyword “RETURN” followed by the description of the actual item (Return Packaging, Return Racks, ...)

Please note that these packages should be marked by unique distinct and irremovable markings; are specifically being returned to the originator and are clearly not destined for or part of a sales transaction. CLdN will not accept any liability for incorrectly declared goods.

Please note this is only applicable for inbound goods in The Netherlands and for Inbound & Outbound goods in Belgium & the UK. For outbound goods in The Netherlands, a declaration remains mandatory.

- **UK:** Please refer to gov.uk/brexit notice on Empty trucks
- **NL:** Please refer to Customs notice 02/07/2018 WdV with subject: “Wijziging werkwijze bij in het vrije verkeer brengen van containers met daarin terugkerende lege verpakkingsmiddelen”
- **BE:** Please refer to Customs procedure notice 74003 of AAD&A

14. XML Invoicing

- To retrieve your invoices in XML please use the following url:
<https://www.cweb.lu/edi/cwebGetInvoices>
- To confirm you have received an invoice properly, you need to confirm/post the receipt, this by sending the <ConfirmationId> (per invoice) after each retrieval to:
<https://www.cweb.lu/edi/cwebConfirmInvoice?invoiceId=nr>
nr = ConfirmationId from the XML (there can be multiple invoices in one retrieval)
As long the ConfirmationId is not received, these invoice(s) will be resend at your next call.

When XML invoicing is activated you will no longer receive invoices via mail or printed. You can still check and print a duplicate on C.WEB, our online application (tab “Invoices”) or you can use the following EDI option:

- (optinal) - Retrieve Zipfile containing invoice in pdf. + attachment.
www.cweb.lu/edi/cwebGetInvoiceDocuments?invoiceId=nr
(without s) and pass a single invoice ID to retrieve a ZIP file containing the PDF and possibly attachments belonging to this invoice

Interested? Please mail a request to: webmaster@cweb.lu



14.1. XML invoicing layout

TAG	DESCRIPTION	TYPE/LENGTH	MAN CON.	REMARKS
FerryInvoice version="1.0"				
Header				
CreationDate	Date file was created	xs:date	M	
ConfirmationId	Used to confirm processing of invoice	xs:int	M	
Environment	T: Test, P:Production	A1	M	
Invoice				
InvoiceHeader				
BillingCompany			M	
Mnemonic	CONSEA: CLdN RoRo S.A.	AN8	M	
VATNumber		AN20	M	
BilledParty			M	
Mnemonic		AN8	M	
VATNumber		AN20	M	
InvoiceNumber	E.g. OIN312014587	AN20	M	
InvoiceDate		xs:date	M	
DueDate		xs:date	O	

TAG	DESCRIPTION	TYPE/LENGTH	MAN CON.	REMARKS
IsCreditNote		xs:boolean	M	
InvoiceCurrency	ISO 4217 currency code	AN3	M	
NetAmount	Amount in invoicecurrency excluding VAT	xs:decimal	M	
VatAmount	VAT amount in invoicecurrency	xs:decimal	O	
TotalAmount	Amount in invoicecurrency including VAT	xs:decimal	M	
VatPercentage	VAT percentage on NetAmount	xs:decimal	O	
VatClause		AN1024	O	
VatCode	Code used to identify VAT regime	AN3	O	See 8.19 VAT codes
Reference		AN128	O	
Comment		AN255	O	
Terms		AN255	O	
Invoiceltems				
Invoiceltem			M	
Service	Description of the performed service	AN36	M	
Description	Invoice Item description	AN255	M	
Amounts			M	
Amount			M	Can be repeated
ChargeCode	E.g. FRE, BAF	AN3	M	See 8.19 Charge codes
Currency	ISO 4217 currency code	AN3	M	
Amount	Amount in currency	xs:decimal	M	
InvoiceAmount	Amount in invoice currency	xs:decimal	M	

TAG	DESCRIPTION	TYPE/LENGTH	MAN CON.	REMARKS
	Shipment		O	
	OurReference	Our reference of the shipment	AN12	M
	Quantity	Number of units	xs:integer	M
	EquipmentCode	Equipment Code, e.g. CONT, TRLR, ...)	AN4	M
	YourReference	Your reference	AN20	O
	UnitNumber	The shipped unit	AN20	M
	IsEmpty		xs:boolean	M
	Length		xs:decimal	M
	Weight		xs:decimal	M
	Description	Description of the goods	AN30	O
	SailingDate	Date of sailing	xs:date	M
	Vessel	Name of the vessel	AN36	M
	POL	UN location code of port of loading	AN5	M
	POD	UN location code of port of discharge	AN5	M
	BLNumber	Bill of Lading number	xs:integer	M

14.1. Example Invoice response XML:

```

<?xml version="1.0" encoding="UTF-8"?>
<cwebInvoiceList version="1.0">
<header>
  <senderID>CWEB</senderID>
  <receiverID>XXXX</receiverID>
  <replyMail>webmaster@cweb.lu</replyMail>
  <msgDate>20131017</msgDate>
  <msgTime>09:48:12</msgTime>
  <msgReference>20131017094812_83_00000004</msgReference>
</header>
<FerryInvoice version="1.0">
  <Header>
    <CreationDate>2013-10-17T00:00:00+02:00</CreationDate>
    <ConfirmationId>182282</ConfirmationId>
    <Environment>T</Environment>
  </Header>
  <Invoice>
    <InvoiceHeader>
      <BillingCompany>
        <Mnemonic>COBFERAN</Mnemonic>
        <VATNumber>BE0413127453</VATNumber>
      </BillingCompany>
      <BilledParty>
        <Mnemonic>XXXX</Mnemonic>
        <VATNumber>XXXX</VATNumber>
      </BilledParty>
      <InvoiceNumber>OIN3/13042021</InvoiceNumber>
      <InvoiceDate>2013-08-05T00:00:00</InvoiceDate>
      <DueDate>2013-09-19T00:00:00</DueDate>
      <IsCreditNote>>false</IsCreditNote>
      <InvoiceCurrency>EUR</InvoiceCurrency>
      <NetAmount>XXXX</NetAmount>
      <VatAmount>0.000</VatAmount>
      <TotalAmount>XXXX</TotalAmount>
      <VatPercentage>0.00</VatPercentage>
      <VatClause>Belgian VAT not applicable art. 21 ? 2 Belgian VAT Code</VatClause>
      <VatCode>I00</VatCode>
      <Reference>13.56.198</Reference>
      <Comment>MAZA - BEZEE/GBPFT - 01/08/2013</Comment>
      <Terms>Terms and conditions valid as per 26/10/2012, have been sent by registered mail on
08/11/2012.</Terms>
    </InvoiceHeader>
    <InvoiceItems>
      <InvoiceItem>
        <Service>Zeebrugge - Purfleet Service</Service>
        <Description>XXXX</Description>
        <Amounts>
          <Amount>
            <ChargeCode>BAF</ChargeCode>
            <Currency>EUR</Currency>
          </Amount>
        </Amounts>
      </InvoiceItem>
    </InvoiceItems>
  </Invoice>
</FerryInvoice>
</cwebInvoiceList>

```

```

    <Amount>XXXX</Amount>
    <InvoiceAmount>XXXX</InvoiceAmount>
  </Amount>
  <Amount>
    <ChargeCode>FRE</ChargeCode>
    <Currency>EUR</Currency>
    <Amount>XXXX</Amount>
    <InvoiceAmount>XXXX</InvoiceAmount>
  </Amount>
</Amounts>
<Shipment>
  <OurReference>32613346</OurReference>
  <YourReference>XXXX</YourReference>
  <Quantity>1</Quantity>
    <EquipmentCode>TRLR</EquipmentCode>
  <UnitNumber>XXXX</UnitNumber>
  <IsEmpty>>false</IsEmpty>
  <Length>13.60</Length>
  <Weight>6649</Weight>
  <Description>Hygiene</Description>
  <SailingDate>2013-08-01T00:00:00</SailingDate>
  <Vessel>MAZA</Vessel>
  <POL>BEZEE</POL>
  <POD>GBPFT</POD>
  <BLNumber>99</BLNumber>
</Shipment>
</InvoiceItem>
</InvoiceItems>
</Invoice>
</FerryInvoice><FerryInvoice version="1.0">
  <Header>
    <CreationDate>2013-10-17T00:00:00+02:00</CreationDate>
    <ConfirmationId>181893</ConfirmationId>
    <Environment>T</Environment>
  </Header>
  <Invoice>
    <InvoiceHeader>
      <BillingCompany>
        <Mnemonic>COBFERAN</Mnemonic>
        <VATNumber>BE0413127453</VATNumber>
      </BillingCompany>
      <BilledParty>
        <Mnemonic>XXXX</Mnemonic>
        <VATNumber>XXXX</VATNumber>
      </BilledParty>
      <InvoiceNumber>OIN3/13041674</InvoiceNumber>
      <InvoiceDate>2013-08-02T00:00:00</InvoiceDate>
      <DueDate>2013-09-16T00:00:00</DueDate>
      <IsCreditNote>>false</IsCreditNote>
      <InvoiceCurrency>EUR</InvoiceCurrency>
      <NetAmount>XXXX</NetAmount>
      <VatAmount>0.000</VatAmount>
      <TotalAmount>XXXX</TotalAmount>
      <VatPercentage>0.00</VatPercentage>
      <VatClause>Belgian VAT not applicable art. 21 ? 2 Belgian VAT Code</VatClause>
      <VatCode>I00</VatCode>

```

```

<Reference>13.56.199</Reference>
<Comment>CATH - GBPFT/BEZEE - 01/08/2013</Comment>
<Terms>Terms and conditions valid as per 26/10/2012, have been sent by registered mail on
08/11/2012.</Terms>
</InvoiceHeader>
<InvoiceItems>
<InvoiceItem>
<Service>Zeebrugge - Purfleet Service</Service>
<Description>XXXX</Description>
<Amounts>
<Amount>
<ChargeCode>BAF</ChargeCode>
<Currency>EUR</Currency>
<Amount>XXXX</Amount>
<InvoiceAmount>XXXX</InvoiceAmount>
</Amount>
<Amount>
<ChargeCode>FRE</ChargeCode>
<Currency>EUR</Currency>
<Amount>XXXX</Amount>
<InvoiceAmount>XXXX</InvoiceAmount>
</Amount>
</Amounts>
<Shipment>
<OurReference>32636316</OurReference>
<YourReference>XXXX</YourReference>
<Quantity>1</Quantity>
<EquipmentCode>TRLR</EquipmentCode>
<UnitNumber>XXXX</UnitNumber>
<IsEmpty>>false</IsEmpty>
<Length>13.60</Length>
<Weight>10000</Weight>
<Description>food</Description>
<SailingDate>2013-08-01T00:00:00</SailingDate>
<Vessel>CATH</Vessel>
<POL>GBPFT</POL>
<POD>BEZEE</POD>
<BLNumber>104</BLNumber>
</Shipment>
</InvoiceItem>
</InvoiceItems>
</Invoice>
</FerryInvoice><FerryInvoice version="1.0">
<Header>
<CreationDate>2013-10-17T00:00:00+02:00</CreationDate>
<ConfirmationId>180839</ConfirmationId>
<Environment>T</Environment>
</Header>
<Invoice>
<InvoiceHeader>
<BillingCompany>
<Mnemonic>CONSEA</Mnemonic>
<VATNumber>LU22055614</VATNumber>
</BillingCompany>
<BilledParty>
<Mnemonic>XXXX</Mnemonic>

```

```

<VATNumber>XXXX</VATNumber>
</BilledParty>
<InvoiceNumber>OIN3/13044741</InvoiceNumber>
<InvoiceDate>2013-08-02T00:00:00</InvoiceDate>
<DueDate>2013-09-01T00:00:00</DueDate>
<IsCreditNote>>false</IsCreditNote>
<InvoiceCurrency>EUR</InvoiceCurrency>
<NetAmount>XXXX</NetAmount>
<VatAmount>0.000</VatAmount>
<TotalAmount>XXXX</TotalAmount>
<VatPercentage>0.00</VatPercentage>
<VatClause>Luxembourg VAT not applicable art. 17 ? 1 b) VAT Code</VatClause>
<VatCode>I00</VatCode>
<Reference>13.66.353</Reference>
<Comment>SPAA - SEGOT/BEZEE - 31/07/2013</Comment>
<Terms>Terms and conditions valid as per 26/10/2012, have been sent by registered mail on
08/11/2012.</Terms>
</InvoiceHeader>
<InvoiceItems>
<InvoiceItem>
<Service>Ferry Sweden</Service>
<Description>XXXX</Description>
<Amounts>
<Amount>
<ChargeCode>FRE</ChargeCode>
<Currency>EUR</Currency>
<Amount>XXXX</Amount>
<InvoiceAmount>XXXX</InvoiceAmount>
</Amount>
<Amount>
<ChargeCode>ONC</ChargeCode>
<Currency>EUR</Currency>
<Amount>XXXX</Amount>
<InvoiceAmount>XXXX</InvoiceAmount>
</Amount>
<Amount>
<ChargeCode>BAF</ChargeCode>
<Currency>EUR</Currency>
<Amount>XXXX</Amount>
<InvoiceAmount>XXXX</InvoiceAmount>
</Amount>
</Amounts>
<Shipment>
<OurReference>32613591</OurReference>
<YourReference>XXXX</YourReference>
<Quantity>1</Quantity>
<EquipmentCode>TRLR</EquipmentCode>
<UnitNumber>XXXX</UnitNumber>
<IsEmpty>>false</IsEmpty>
<Length>13.60</Length>
<Weight>6649</Weight>
<Description>Hygiene</Description>
<SailingDate>2013-07-31T00:00:00</SailingDate>
<Vessel>SPAA</Vessel>
<POL>SEGOT</POL>
<POD>BEZEE</POD>

```

```

    <BLNumber>69</BLNumber>
  </Shipment>
</InvoiceItem>
</InvoiceItems>
</Invoice>
</FerryInvoice><FerryInvoice version="1.0">
  <Header>
    <CreationDate>2013-10-17T00:00:00+02:00</CreationDate>
    <ConfirmationId>181937</ConfirmationId>
    <Environment>T</Environment>
  </Header>
  <Invoice>
    <InvoiceHeader>
      <BillingCompany>
        <Mnemonic>CONSEA</Mnemonic>
        <VATNumber>LU22055614</VATNumber>
      </BillingCompany>
      <BilledParty>
        <Mnemonic>XXXX</Mnemonic>
        <VATNumber>XXXX</VATNumber>
      </BilledParty>
      <InvoiceNumber>OIN3/13044779</InvoiceNumber>
      <InvoiceDate>2013-08-02T00:00:00</InvoiceDate>
      <DueDate>2013-09-01T00:00:00</DueDate>
      <IsCreditNote>>false</IsCreditNote>
      <InvoiceCurrency>EUR</InvoiceCurrency>
      <NetAmount>XXXX</NetAmount>
      <VatAmount>0.000</VatAmount>
      <TotalAmount>XXXX</TotalAmount>
      <VatPercentage>0.00</VatPercentage>
      <VatClause>Luxembourg VAT not applicable art. 17 ? 1 b) VAT Code</VatClause>
      <VatCode>I00</VatCode>
      <Reference>13.17.132</Reference>
      <Comment>ADEL - NLRTM/IEDUB - 30/07/2013</Comment>
      <Terms>Terms and conditions valid as per 26/10/2012, have been sent by registered mail on
08/11/2012.</Terms>
    </InvoiceHeader>
    <InvoiceItems>
      <InvoiceItem>
        <Service>Rotterdam - Dublin Service</Service>
        <Description>XXXX</Description>
        <Amounts>
          <Amount>
            <ChargeCode>BAF</ChargeCode>
            <Currency>EUR</Currency>
            <Amount>XXXX</Amount>
            <InvoiceAmount>XXXX</InvoiceAmount>
          </Amount>
          <Amount>
            <ChargeCode>FRE</ChargeCode>
            <Currency>EUR</Currency>
            <Amount>XXXX</Amount>
            <InvoiceAmount>XXXX</InvoiceAmount>
          </Amount>
        </Amounts>
      </InvoiceItem>
    </InvoiceItems>
  </Invoice>
</FerryInvoice>
  </Shipment>

```

```

<OurReference>32615973</OurReference>
<YourReference>XXXX</YourReference>
<Quantity>1</Quantity>

<EquipmentCode>TRLR</EquipmentCode>
<UnitNumber>XXXX</UnitNumber>
<IsEmpty>>false</IsEmpty>
<Length>13.60</Length>
<Weight>6138</Weight>
<Description>machinery</Description>
<SailingDate>2013-07-30T00:00:00</SailingDate>
<Vessel>ADEL</Vessel>
<POL>NLRTM</POL>
<POD>IEDUB</POD>
<BLNumber>53</BLNumber>
</Shipment>
</InvoiceItem>
<InvoiceItem>
<Service>Rotterdam - Dublin Service</Service>
<Description>XXXX</Description>
<Amounts>
<Amount>
<ChargeCode>BAF</ChargeCode>
<Currency>EUR</Currency>
<Amount>XXXX</Amount>
<InvoiceAmount>XXXX</InvoiceAmount>
</Amount>
<Amount>
<ChargeCode>FRE</ChargeCode>
<Currency>EUR</Currency>
<Amount>XXXX</Amount>
<InvoiceAmount>XXXX</InvoiceAmount>
</Amount>
</Amounts>
<Shipment>
<OurReference>32616718</OurReference>
<YourReference>XXXX</YourReference>
<Quantity>1</Quantity>
<EquipmentCode>TRLR</EquipmentCode>
<UnitNumber>XXXX</UnitNumber>
<IsEmpty>>false</IsEmpty>
<Length>13.60</Length>
<Weight>24500</Weight>
<Description>car parts</Description>
<SailingDate>2013-07-30T00:00:00</SailingDate>
<Vessel>ADEL</Vessel>
<POL>NLRTM</POL>
<POD>IEDUB</POD>
<BLNumber>53</BLNumber>
</Shipment>
</InvoiceItem>
<InvoiceItem>
<Service>Rotterdam - Dublin Service</Service>
<Description>XXXX</Description>
<Amounts>
<Amount>

```



```
<ChargeCode>BAF</ChargeCode>
<Currency>EUR</Currency>
<Amount>XXXX</Amount>
<InvoiceAmount>XXXX</InvoiceAmount>
</Amount>
<Amount>
<ChargeCode>FRE</ChargeCode>
<Currency>EUR</Currency>
<Amount>XXXX</Amount>
<InvoiceAmount>XXXX</InvoiceAmount>
</Amount>
</Amounts>
<Shipment>
<OurReference>32577105</OurReference>
<YourReference>XXXX</YourReference>
<Quantity>1</Quantity>
<EquipmentCode>TRLR</EquipmentCode>
<UnitNumber>XXXX</UnitNumber>
<IsEmpty>false</IsEmpty>
<Length>13.60</Length>
<Weight>24000</Weight>
<Description>timber</Description>
<SailingDate>2013-07-30T00:00:00</SailingDate>
<Vessel>ADEL</Vessel>
<POL>NLRTM</POL>
<POD>IEDUB</POD>
<BLNumber>53</BLNumber>
</Shipment>
</InvoiceItem>
</InvoiceItems>
</Invoice>
</FerryInvoice>
</cwebInvoiceList>
```